

Selected Socio-Economic Data

Olivette city, Missouri

African American and White, Not Hispanic

Data Set: 2008-2012 American Community Survey 5-Year Estimates

www.fairvote2020.org

www.fairdata2000.com

[29-Dec-13](#)

C02003.DETAILED RACE - Universe: TOTAL POPULATION

Data Set: 2008-2012 American Community Survey 5-Year Estimates

	Olivette city, Missouri		
	Population	Margin of Error (+/-)	% of Total
Total:	7,734	32	100.0%
Population of one race:	7,429	175	96.1%
White	5,112	333	66.1%
Black or African American	1,460	282	18.9%
American Indian and Alaska Native	0	16	0.0%
Asian alone	811	254	10.5%
Native Hawaiian and Other Pacific Islander	0	16	0.0%
Some other race	46	53	0.6%
Population of two or more races:	305	168	3.9%
Two races including Some other race	23	27	0.3%
Two races excluding Some other race, and three or more races	282	163	3.6%
Population of two races:	278	156	3.6%
White; Black or African American	122	109	1.6%
White; American Indian and Alaska Native	11	17	0.1%
White; Asian	122	103	1.6%
Black or African American; American Indian and Alaska Native	0	16	0.0%
All other two race combinations	23	27	0.3%
Population of three races	27	46	0.3%
Population of four or more races	0	16	0.0%

Note: Hispanics may be of any race. See Table B03002 and chart.

Source: U.S. Census Bureau, 2008-2012 American Community Survey

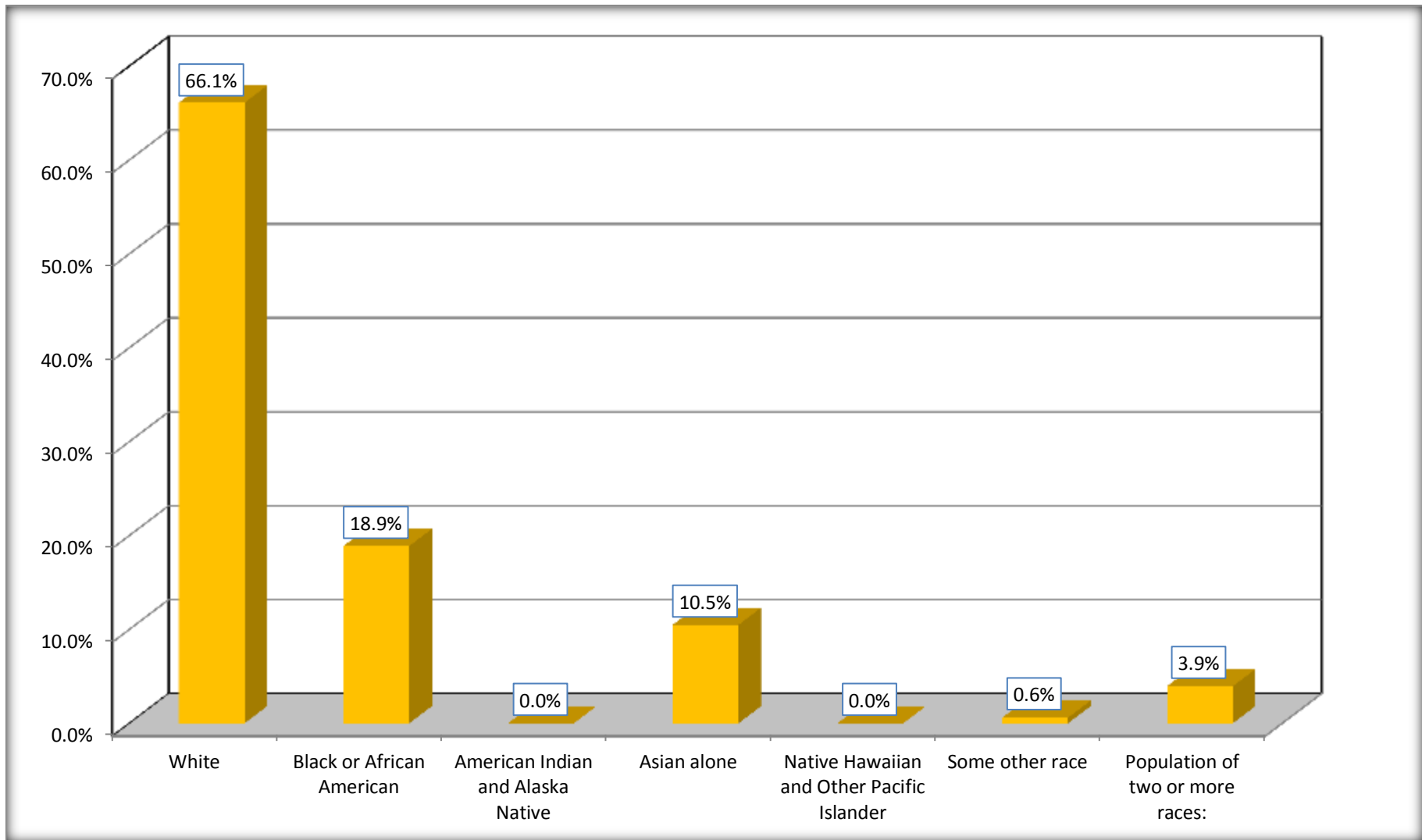
Although the American Community Survey (ACS) produces population, demographic and housing unit estimates, it is the Census Bureau's Population Estimates Program that produces and disseminates the official estimates of the population for the nation, states, counties, cities and towns and estimates of housing units for states and counties.

For information on confidentiality protection, sampling error, nonsampling error, and definitions, see Survey Methodology.

<http://www.census.gov/acs/www/UseData/index.htm>

Population by Race

Olivette city, Missouri



Source: C02003.DETAILED RACE - Universe: TOTAL POPULATION
Data Set: 2008-2012 American Community Survey 5-Year Estimates

B03002. HISPANIC OR LATINO ORIGIN BY RACE - Universe: TOTAL POPULATION

Data Set: 2008-2012 American Community Survey 5-Year Estimates

	Olivette city, Missouri		
	Population	Margin of Error (+/-)	% of Total
Total:	7,734	32	100.0%
Not Hispanic or Latino:	7,405	351	95.7%
White alone	4,849	409	62.7%
Black or African American alone	1,460	282	18.9%
American Indian and Alaska Native alone	0	16	0.0%
Asian alone	811	254	10.5%
Native Hawaiian and Other Pacific Islander alone	0	16	0.0%
Some other race alone	16	25	0.2%
Two or more races:	269	155	3.5%
Two races including Some other race	14	23	0.2%
Two races excluding Some other race, and three or more races	255	154	3.3%
Hispanic or Latino	329	350	4.3%

Source: U.S. Census Bureau, 2008-2012 American Community Survey

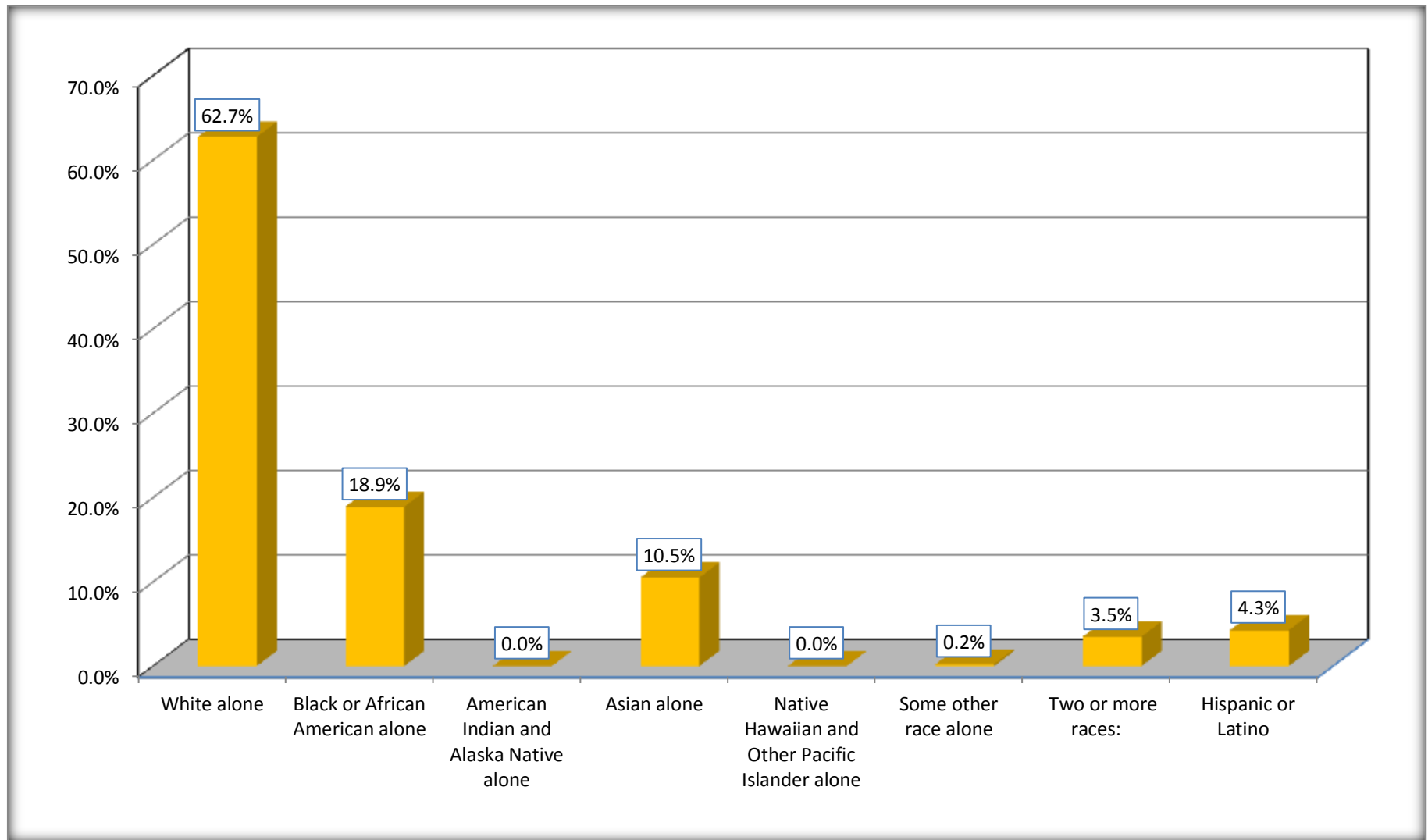
Although the American Community Survey (ACS) produces population, demographic and housing unit estimates, it is the Census Bureau's Population Estimates Program that produces and disseminates the official estimates of the population for the nation, states, counties, cities and towns and estimates of housing units for states and counties.

For information on confidentiality protection, sampling error, nonsampling error, and definitions, see Survey Methodology.

<http://www.census.gov/acs/www/UseData/index.htm>

Non-Hispanic by Race and Hispanic Population

Olivette city, Missouri



Source: B03002. HISPANIC OR LATINO ORIGIN BY RACE - Universe: TOTAL POPULATION
Data Set: 2008-2012 American Community Survey 5-Year Estimates

B03002. HISPANIC OR LATINO ORIGIN BY RACE

Data Set: 2008-2012 American Community Survey 5-Year Estimates

	Olivette city, Missouri		
	Population	Margin of Error (+/-)	% of Total
Hispanic or Latino:	329	350	100.0%
White alone	263	349	79.9%
Black or African American alone	0	16	0.0%
American Indian and Alaska Native alone	0	16	0.0%
Asian alone	0	16	0.0%
Native Hawaiian and Other Pacific Islander alone	0	16	0.0%
Some other race alone	30	46	9.1%
Two or more races:	36	61	10.9%
Two races including Some other race	9	15	2.7%
Two races excluding Some other race, and three or more races	27	46	8.2%

Source: U.S. Census Bureau, 2008-2012 American Community Survey

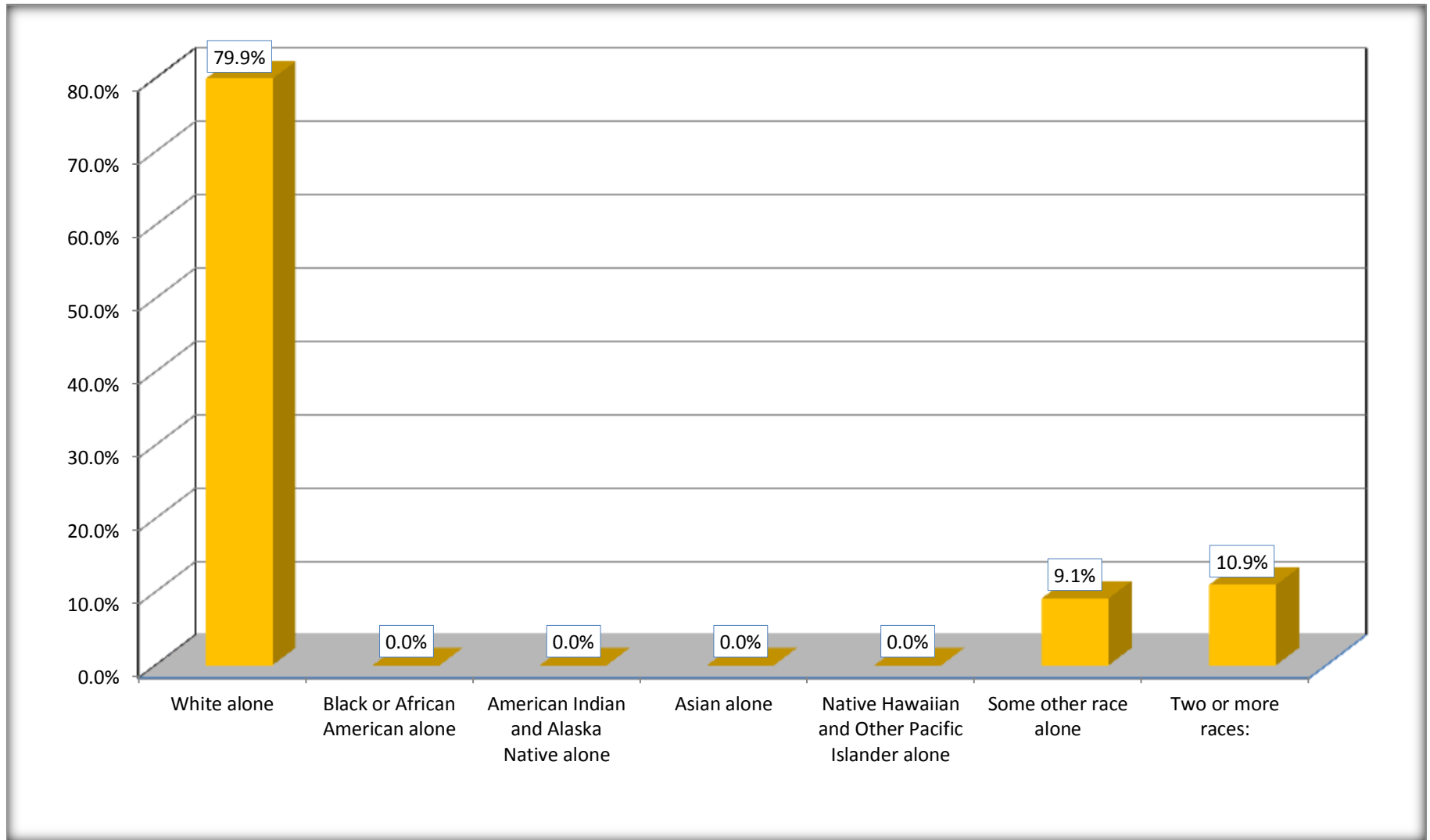
Although the American Community Survey (ACS) produces population, demographic and housing unit estimates, it is the Census Bureau's Population Estimates Program that produces and disseminates the official estimates of the population for the nation, states, counties, cities and towns and estimates of housing units for states and counties.

For information on confidentiality protection, sampling error, nonsampling error, and definitions, see Survey Methodology.

<http://www.census.gov/acs/www/UseData/index.htm>

Hispanic or Latino Origin by Race

Olivette city, Missouri



Source: B03002. HISPANIC OR LATINO ORIGIN BY RACE
Data Set: 2008-2012 American Community Survey 5-Year Estimates

B01001. SEX BY AGE

Data Set: 2008-2012 American Community Survey 5-Year Estimates

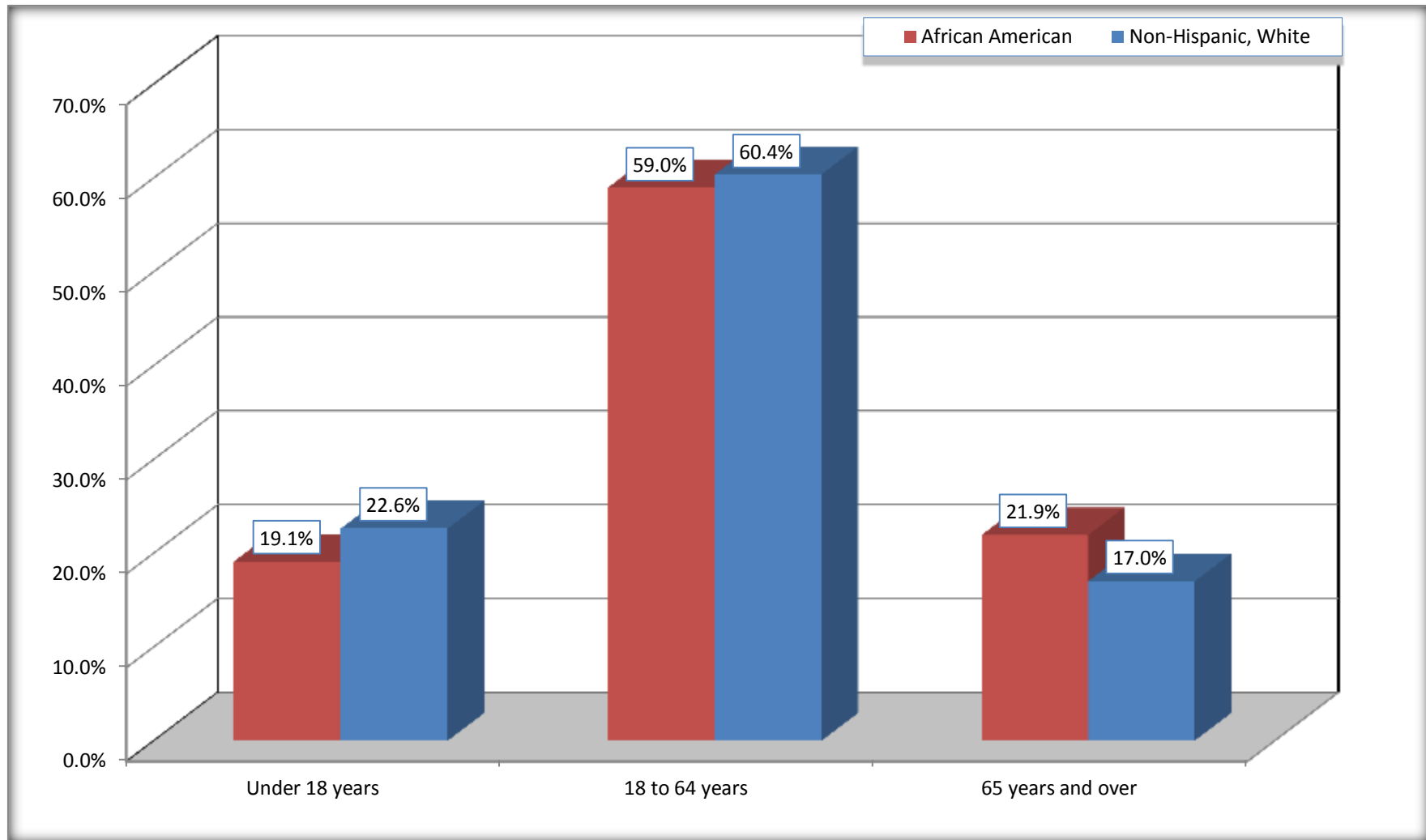
	Olivette city, Missouri					
	African American	Margin of Error (+/-)	% of AA Total	White, Not Hispanic	Margin of Error (+/-)	% of NHW Total
Total:	1,460	282	100.0%	4,849	409	100.0%
Under 18 years	279	NC	19.1%	1,097	NC	22.6%
18 to 64 years	861	NC	59.0%	2,928	NC	60.4%
65 years and over	320	NC	21.9%	824	NC	17.0%
Male:	621	157	42.5%	2,343	389	48.3%
Under 18 years	160	NC	11.0%	578	NC	11.9%
18 to 64 years	378	NC	25.9%	1,397	NC	28.8%
65 years and over	83	NC	5.7%	368	NC	7.6%
Female:	839	211	57.5%	2,506	412	51.7%
Under 18 years	119	NC	8.2%	519	NC	10.7%
18 to 64 years	483	NC	33.1%	1,531	NC	31.6%
65 years and over	237	NC	16.2%	456	NC	9.4%

Source: U.S. Census Bureau, 2008-2012 American Community Survey

Although the American Community Survey (ACS) produces population, demographic and housing unit estimates, it is the Census Bureau's Population Estimates Program that produces and disseminates the official estimates of the population for the nation, states, counties, cities and towns and estimates of housing units for states and counties.

For information on confidentiality protection, sampling error, nonsampling error, and definitions, see Survey Methodology.
<http://www.census.gov/acs/www/UseData/index.htm>

Population by Age Olivette city, Missouri



Source: B01001. SEX BY AGE
Data Set: 2008-2012 American Community Survey 5-Year Estimates

B05003. SEX BY AGE BY CITIZENSHIP STATUS

Data Set: 2008-2012 American Community Survey 5-Year Estimates

	Olivette city, Missouri					
	African American	Margin of Error (+/-)	% of AA Total by Age	White, Not Hispanic	Margin of Error (+/-)	% of NHW Total by Age
Total:	1,460	282	100.0%	4,849	409	100.0%
Under 18 years:	279	NC	100.0%	1,097	NC	100.0%
Native	261	NC	93.5%	1,042	NC	95.0%
Foreign born:	18	NC	6.5%	55	NC	5.0%
Naturalized U.S. citizen	8	NC	2.9%	25	NC	2.3%
Not a U.S. citizen	10	NC	3.6%	30	NC	2.7%
18 years and over:	1,181	NC	100.0%	3,752	NC	100.0%
Native	1,078	NC	91.3%	3,504	NC	93.4%
Foreign born:	103	NC	8.7%	248	NC	6.6%
Naturalized U.S. citizen	82	NC	6.9%	164	NC	4.4%
Not a U.S. citizen	21	NC	1.8%	84	NC	2.2%
Male:	621	157	42.5%	2,343	225	48.3%
Under 18 years:	160	69	100.0%	578	133	100.0%
Native	142	69	88.8%	560	131	96.9%
Foreign born:	18	19	11.3%	18	30	3.1%
Naturalized U.S. citizen	8	12	5.0%	18	30	3.1%
Not a U.S. citizen	10	15	6.3%	0	16	0.0%
18 years and over:	461	127	100.0%	1,765	179	100.0%
Native	412	123	89.4%	1,654	166	93.7%
Foreign born:	49	42	10.6%	111	61	6.3%
Naturalized U.S. citizen	38	30	8.2%	87	52	4.9%
Not a U.S. citizen	11	19	2.4%	24	29	1.4%

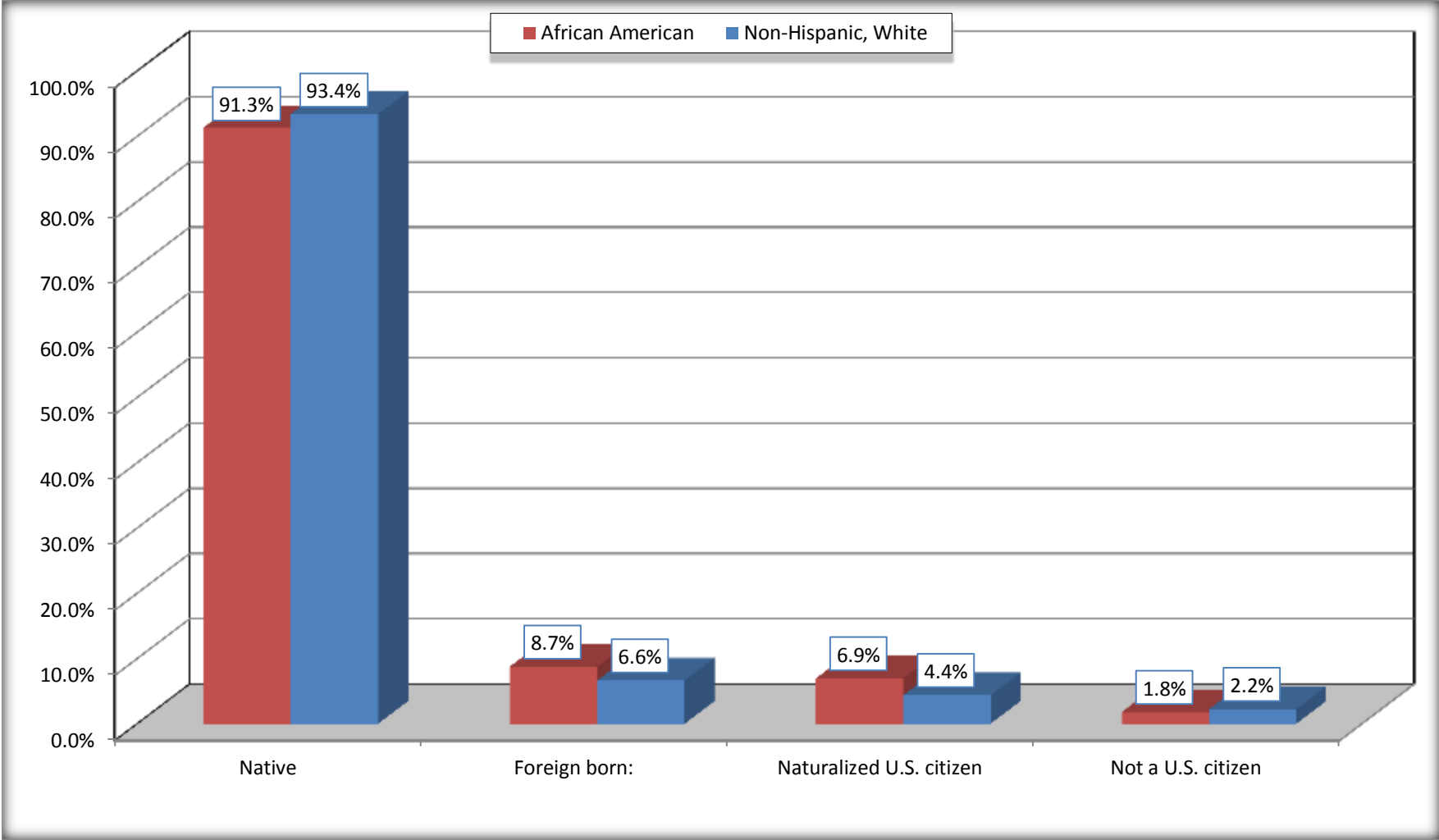
	Olivette city, Missouri					
	African American	Margin of Error (+/-)	% of AA by Age	White, Not Hispanic	Margin of Error (+/-)	% of NHW by Age
Female:	839	211	57.5%	2,506	258	51.7%
Under 18 years:	119	55	100.0%	519	119	100.0%
Native	119	55	100.0%	482	115	92.9%
Foreign born:	0	16	0.0%	37	47	7.1%
Naturalized U.S. citizen	0	16	0.0%	7	11	1.3%
Not a U.S. citizen	0	16	0.0%	30	46	5.8%
18 years and over:	720	202	100.0%	1,987	197	100.0%
Native	666	191	92.5%	1,850	198	93.1%
Foreign born:	54	40	7.5%	137	66	6.9%
Naturalized U.S. citizen	44	37	6.1%	77	49	3.9%
Not a U.S. citizen	10	15	1.4%	60	40	3.0%

Source: U.S. Census Bureau, 2008-2012 American Community Survey

For information on confidentiality protection, sampling error, nonsampling error, and definitions, see Survey Methodology.
<http://www.census.gov/acs/www/UseData/index.htm>

Citizenship Status of Voting Age Population (18 and Over)

Olivette city, Missouri



Source: B05003. SEX BY AGE BY CITIZENSHIP STATUS
Data Set: 2008-2012 American Community Survey 5-Year Estimates

**B07004. GEOGRAPHICAL MOBILITY IN THE PAST YEAR BY RACE FOR CURRENT RESIDENCE IN THE UNITED STATES - Universe:
POPULATION 1 YEAR AND OVER**

Data Set: 2008-2012 American Community Survey 5-Year Estimates

	Olivette city, Missouri					
	African American	Margin of Error (+/-)	% of AA Total	White, Not Hispanic	Margin of Error (+/-)	% of NHW Total
Total:	1,460	282	100.0%	4,815	406	100.0%
Same house 1 year ago	1,393	280	95.4%	4,586	396	95.2%
Moved within same county	32	38	2.2%	143	100	3.0%
Moved from different county within same state	0	16	0.0%	48	46	1.0%
Moved from different state	23	34	1.6%	25	30	0.5%
Moved from abroad	12	19	0.8%	13	20	0.3%

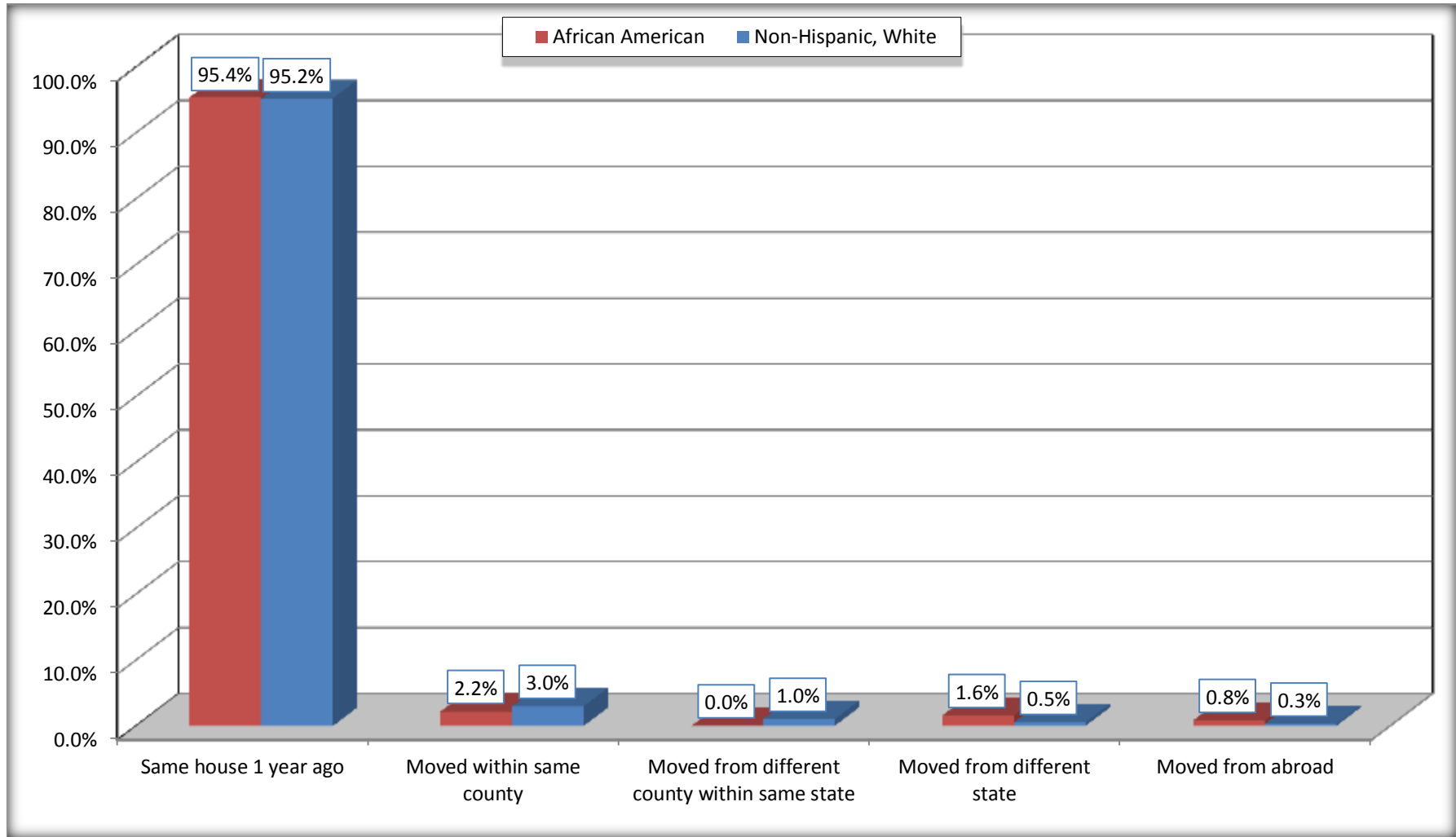
Source: U.S. Census Bureau, 2008-2012 American Community Survey

For information on confidentiality protection, sampling error, nonsampling error, and definitions, see Survey Methodology.

<http://www.census.gov/acs/www/UseData/index.htm>

Geographical Mobility in the Past Year (Population 1 Year and Over)

Olivette city, Missouri



Source: B07004. GEOGRAPHICAL MOBILITY IN THE PAST YEAR BY RACE FOR CURRENT RESIDENCE IN THE UNITED STATES - Universe: POPULATION 1 YEAR AND OVER

Data Set: 2008-2012 American Community Survey 5-Year Estimates

B08105. MEANS OF TRANSPORTATION TO WORK - Universe: WORKERS 16 YEARS AND OVER

Data Set: 2008-2012 American Community Survey 5-Year Estimates

	Olivette city, Missouri					
	African American	Margin of Error (+/-)	% of AA Total	White, Not Hispanic	Margin of Error (+/-)	% of NHW Total
Total:	818	182	100.0%	2435	262	100.0%
Car, truck, or van - drove alone	632	174	77.3%	2057	240	84.5%
Car, truck, or van - carpooled	136	87	16.6%	86	49	3.5%
Public transportation (excluding taxicab)	9	15	1.1%	24	20	1.0%
Walked	0	16	0.0%	14	22	0.6%
Taxicab, motorcycle, bicycle, or other means	41	66	5.0%	51	39	2.1%
Worked at home	0	16	0.0%	203	84	8.3%

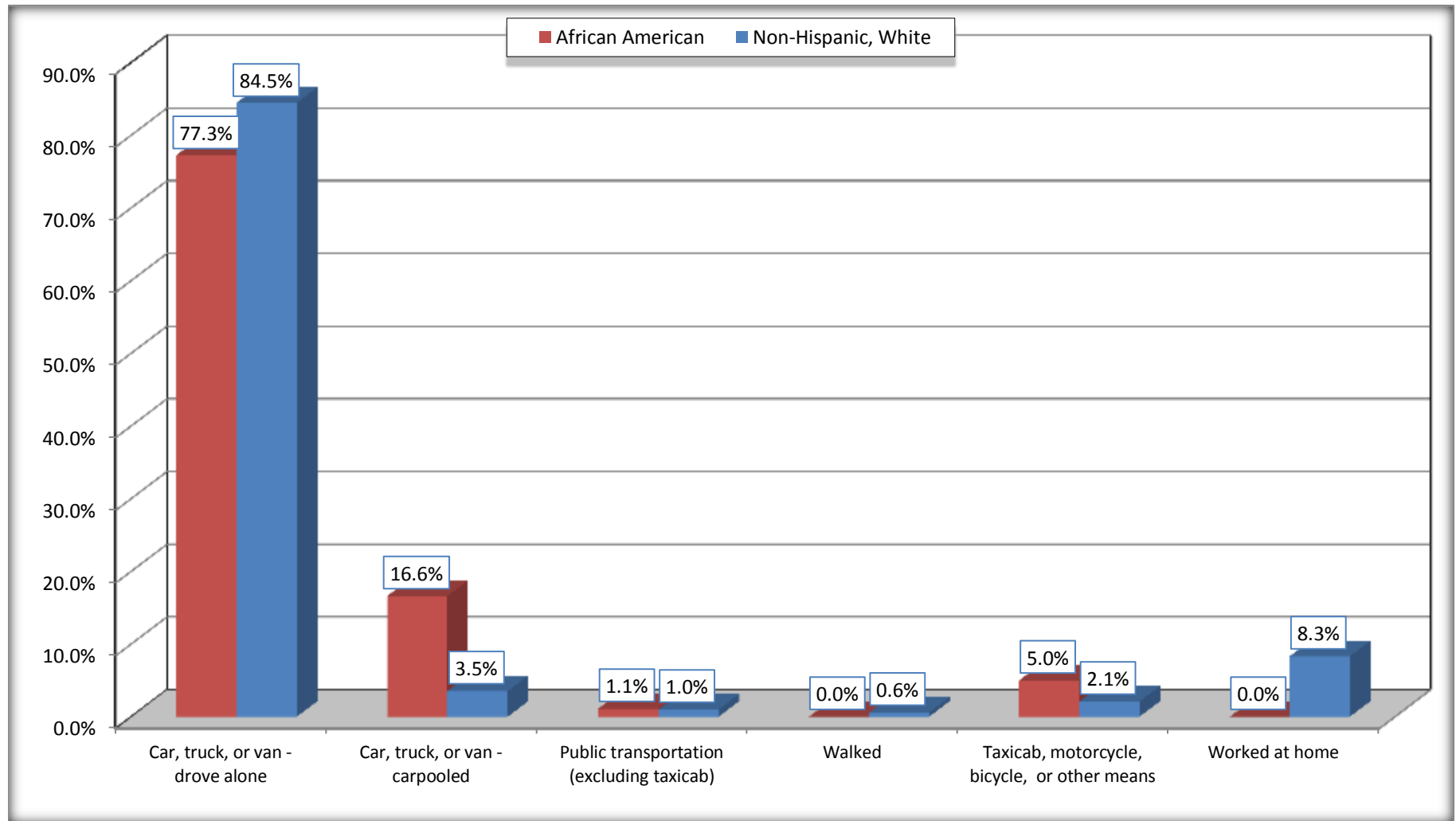
Source: U.S. Census Bureau, 2008-2012 American Community Survey

For information on confidentiality protection, sampling error, nonsampling error, and definitions, see Survey Methodology.

<http://www.census.gov/acs/www/UseData/index.htm>

Means of Transportation to Work (Workers 16 Years and Over)

Olivette city, Missouri



Source: B08105. MEANS OF TRANSPORTATION TO WORK - Universe: WORKERS 16 YEARS AND OVER
Data Set: 2008-2012 American Community Survey 5-Year Estimates

B11002. HOUSEHOLD TYPE BY RELATIVES AND NONRELATIVES FOR POPULATION IN HOUSEHOLDS

Data Set: 2008-2012 American Community Survey 5-Year Estimates

	Olivette city, Missouri					
	African American	Margin of Error (+/-)	% of AA Total	White, Not Hispanic	Margin of Error (+/-)	% of NHW Total
Total:	1367	285	100.0%	5060	386	100.0%
In family households	1099	277	80.4%	4219	382	83.4%
In nonfamily households	268	100	19.6%	841	205	16.6%

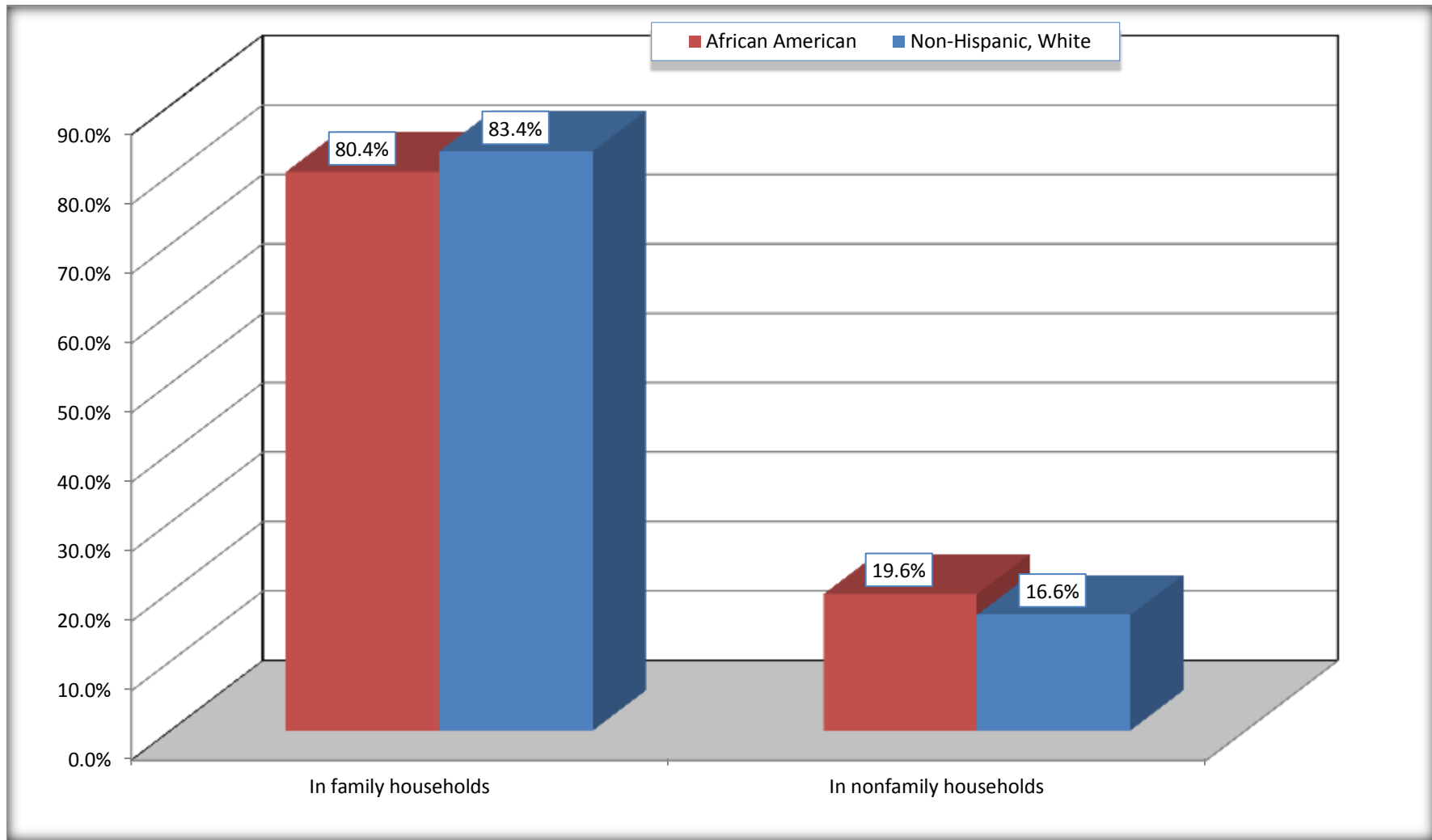
Source: U.S. Census Bureau, 2008-2012 American Community Survey

For information on confidentiality protection, sampling error, nonsampling error, and definitions, see Survey Methodology.

<http://www.census.gov/acs/www/UseData/index.htm>

Household Type for Population in Households

Olivette city, Missouri



Source: B11002. HOUSEHOLD TYPE BY RELATIVES AND NONRELATIVES FOR POPULATION IN HOUSEHOLDS
Data Set: 2008-2012 American Community Survey 5-Year Estimates

B12002. MARITAL STATUS FOR THE POPULATION 15 YEARS AND OVER

Data Set: 2008-2012 American Community Survey 5-Year Estimates

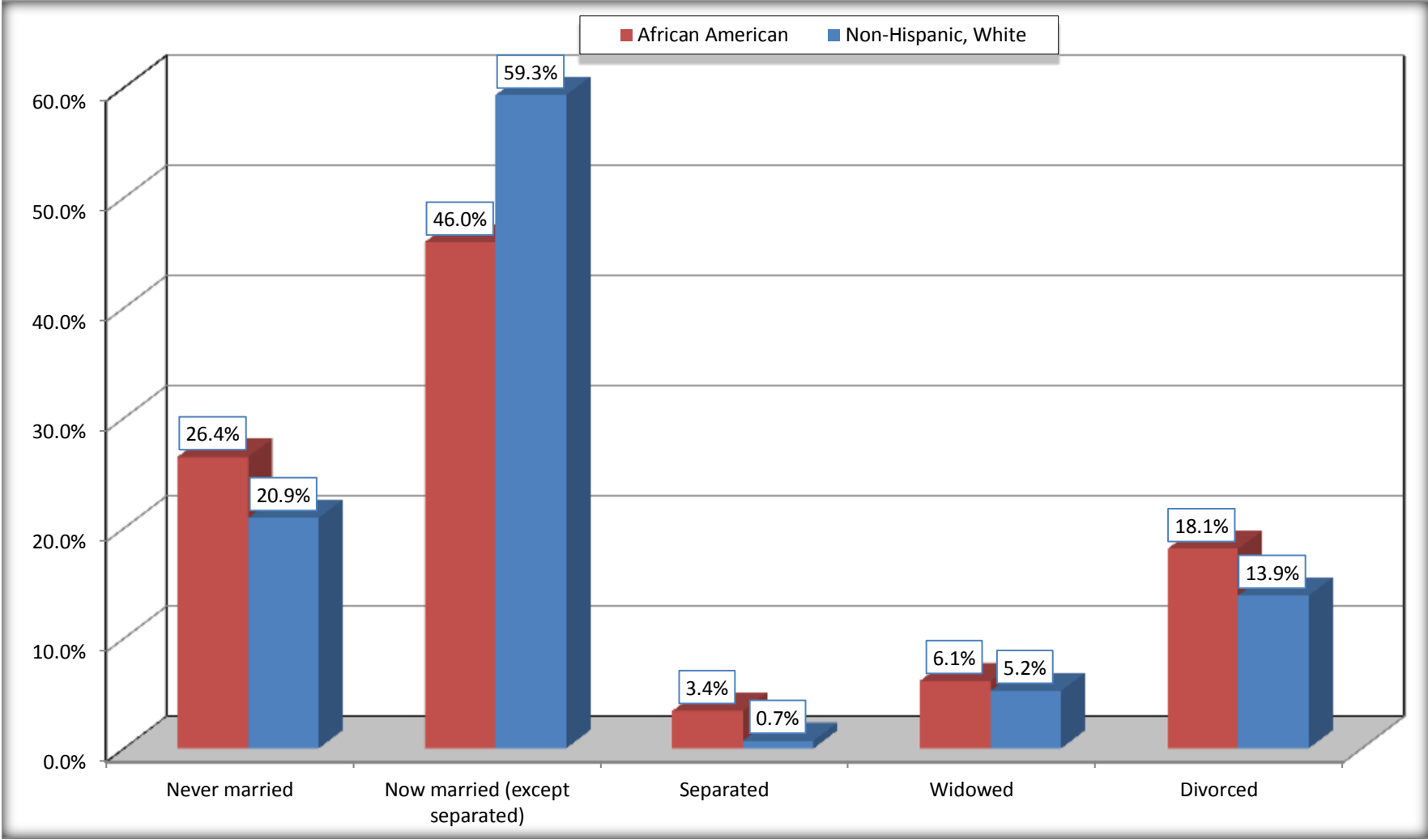
	Olivette city, Missouri					
	African American	Margin of Error (+/-)	% of AA Total	White, Not Hispanic	Margin of Error (+/-)	% of NHW Total
Total:	1,210	249	100.0%	3,924	350	100.0%
Never married	320	NC	26.4%	821	NC	20.9%
Now married (except separated)	556	NC	46.0%	2,327	NC	59.3%
Separated	41	NC	3.4%	27	NC	0.7%
Widowed	74	NC	6.1%	205	NC	5.2%
Divorced	219	NC	18.1%	544	NC	13.9%
Male:	490	130	40.5%	1,810	189	46.1%
Never married	140	83	11.6%	430	125	11.0%
Now married (except separated)	293	79	24.2%	1,168	118	29.8%
Separated	0	16	0.0%	16	24	0.4%
Widowed	0	16	0.0%	40	32	1.0%
Divorced	57	65	4.7%	156	61	4.0%
Female:	720	202	59.5%	2,114	227	53.9%
Never married	180	116	14.9%	391	130	10.0%
Now married (except separated)	263	73	21.7%	1,159	125	29.5%
Separated	41	32	3.4%	11	16	0.3%
Widowed	74	54	6.1%	165	63	4.2%
Divorced	162	84	13.4%	388	108	9.9%

Source: U.S. Census Bureau, 2008-2012 American Community Survey

For information on confidentiality protection, sampling error, nonsampling error, and definitions, see Survey Methodology.

<http://www.census.gov/acs/www/UseData/index.htm>

Marital Status for the Population 15 Years and Over
Olivette city, Missouri



Source: B12002. MARITAL STATUS FOR THE POPULATION 15 YEARS AND OVER
Data Set: 2008-2012 American Community Survey 5-Year Estimates

C15002. SEX BY EDUCATIONAL ATTAINMENT FOR THE POPULATION 25 YEARS AND OVER

Data Set: 2008-2012 American Community Survey 5-Year Estimates

	Olivette city, Missouri					
	African American	Margin of Error (+/-)	% of AA Total	White, Not Hispanic	Margin of Error (+/-)	% of NHW Total
Total:	1,132	230	100.0%	3,561	291	100.0%
Less than high school diploma	74	NC	6.5%	85	NC	2.4%
High school graduate, GED, or alternative	211	NC	18.6%	347	NC	9.7%
Some college or associate's degree	343	NC	30.3%	648	NC	18.2%
Bachelor's degree or higher	504	NC	44.5%	2,481	NC	69.7%
Male:	429	116	37.9%	1,666	173	46.8%
Less than high school diploma	29	47	2.6%	67	52	1.9%
High school graduate, GED, or alternative	47	38	4.2%	137	66	3.8%
Some college or associate's degree	124	75	11.0%	317	112	8.9%
Bachelor's degree or higher	229	91	20.2%	1,145	129	32.2%
Female:	703	197	62.1%	1,895	179	53.2%
Less than high school diploma	45	45	4.0%	18	22	0.5%
High school graduate, GED, or alternative	164	107	14.5%	210	74	5.9%
Some college or associate's degree	219	82	19.3%	331	101	9.3%
Bachelor's degree or higher	275	109	24.3%	1,336	161	37.5%

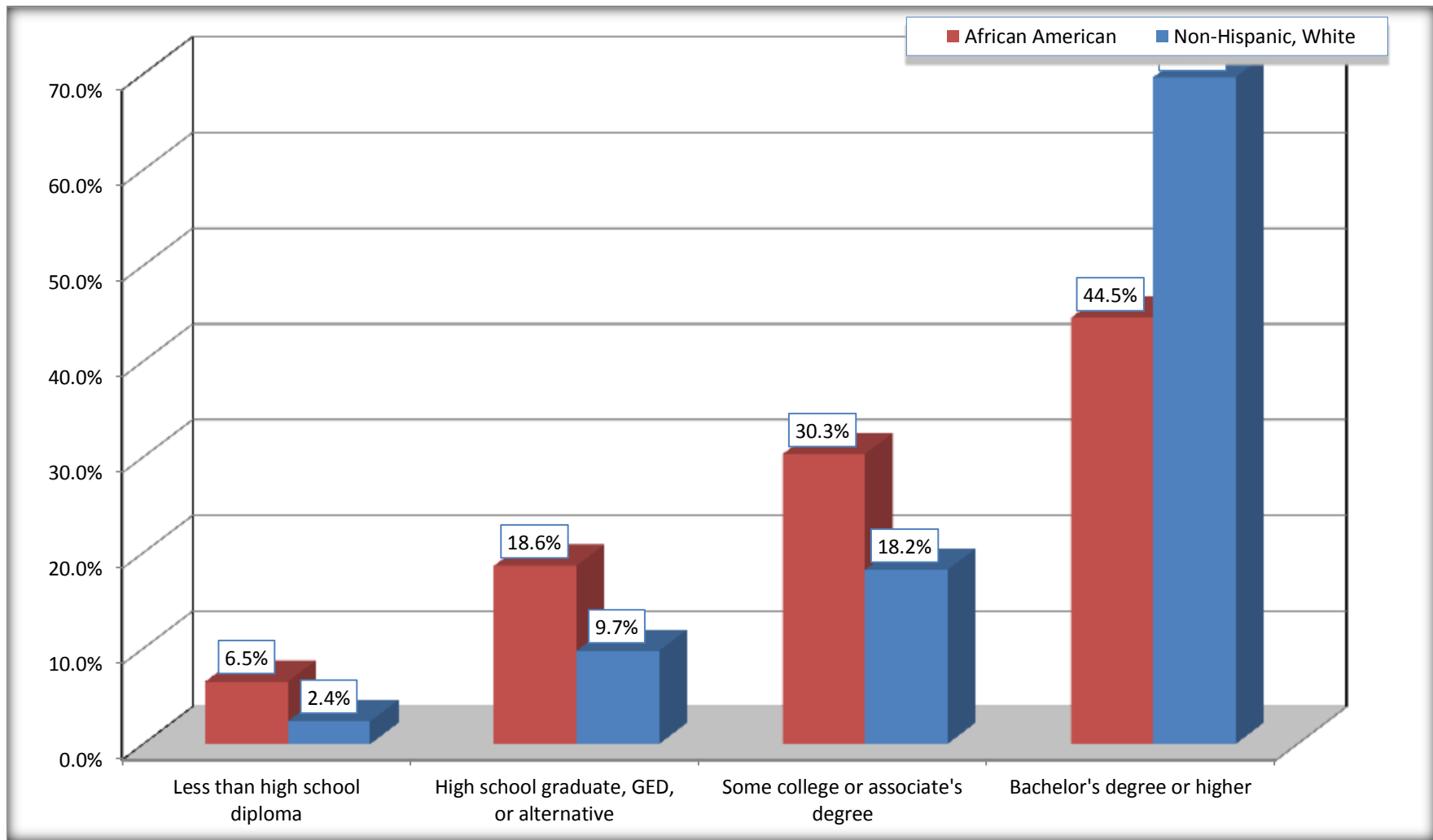
Source: U.S. Census Bureau, 2008-2012 American Community Survey

For information on confidentiality protection, sampling error, nonsampling error, and definitions, see Survey Methodology.

<http://www.census.gov/acs/www/UseData/index.htm>

Educational Attainment for the Population 25 Years and Older

Olivette city, Missouri



Source: C15002. SEX BY EDUCATIONAL ATTAINMENT FOR THE POPULATION 25 YEARS AND OVER
Data Set: 2008-2012 American Community Survey 5-Year Estimates

B17010. POVERTY STATUS IN THE PAST 12 MONTHS OF FAMILIES BY FAMILY TYPE BY PRESENCE OF RELATED CHILDREN UNDER 18 YEARS

Data Set: 2008-2012 American Community Survey 5-Year Estimates

	Olivette city, Missouri					
	African American	Margin of Error (+/-)	% of AA Total	White, Not Hispanic	Margin of Error (+/-)	% of NHW Total
Total:	423	117	100.0%	1,461	141	100.0%
Income in the past 12 months below poverty level:	31	28	7.3%	33	31	2.3%
Married-couple family:	0	16	0.0%	11	17	0.8%
With related children under 18 years	0	16	0.0%	11	17	0.8%
Other family:	31	28	7.3%	22	25	1.5%
Male householder, no wife present	0	16	0.0%	0	16	0.0%
With related children under 18 years	0	16	0.0%	0	16	0.0%
Female householder, no husband present	31	28	7.3%	22	25	1.5%
With related children under 18 years	31	28	7.3%	22	25	1.5%
Income in the past 12 months at or above poverty level:	392	112	92.7%	1,428	138	97.7%
Married-couple family:	233	69	55.1%	1,150	118	78.7%
With related children under 18 years	95	44	22.5%	495	97	33.9%
Other family:	159	89	37.6%	278	98	19.0%
Male householder, no wife present	28	44	6.6%	51	43	3.5%
With related children under 18 years	28	44	6.6%	10	17	0.7%
Female householder, no husband present	131	86	31.0%	227	93	15.5%
With related children under 18 years	45	34	10.6%	108	64	7.4%

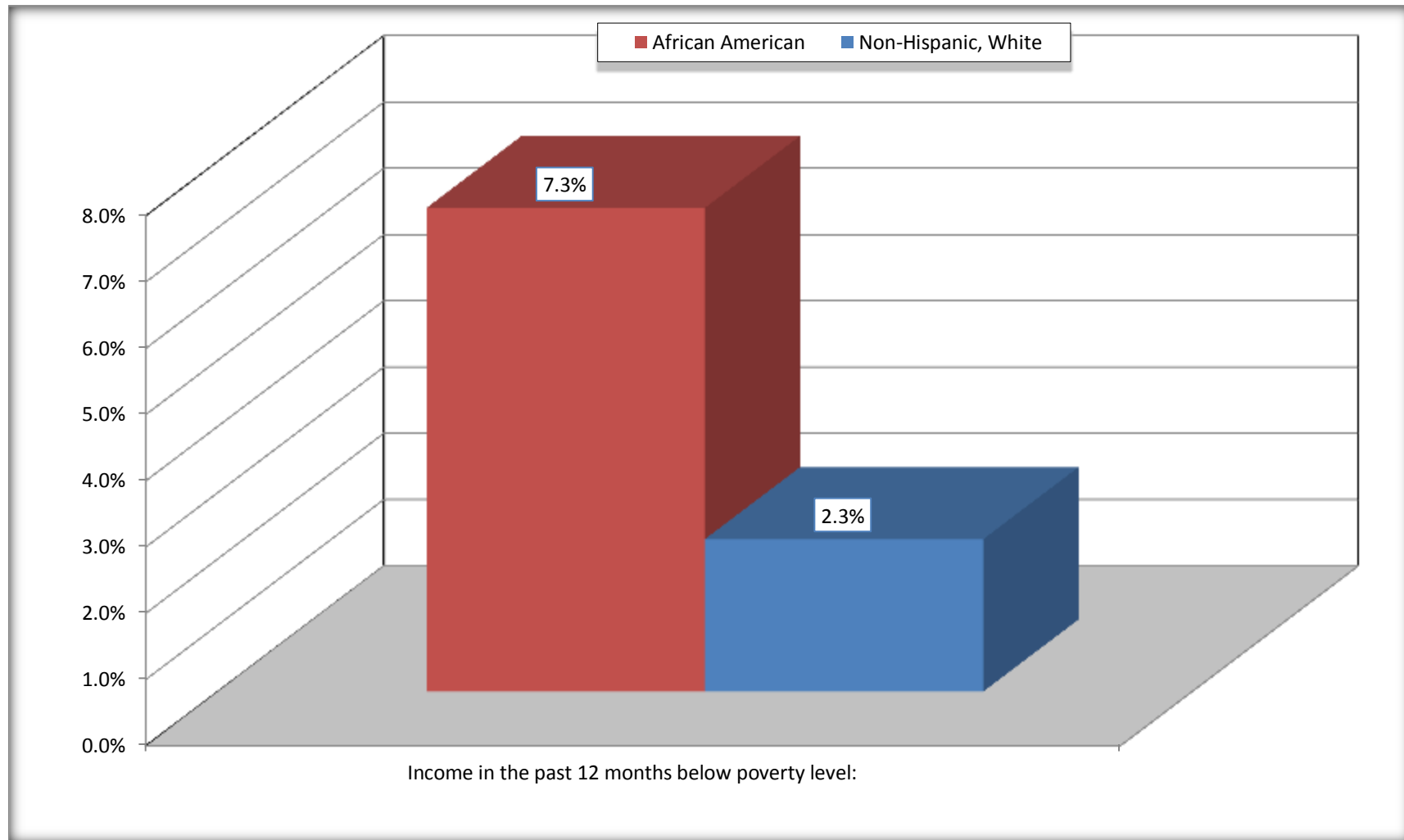
Source: U.S. Census Bureau, 2008-2012 American Community Survey

For information on confidentiality protection, sampling error, nonsampling error, and definitions, see Survey Methodology.

<http://www.census.gov/acs/www/UseData/index.htm>

Family Households Below Poverty in the Past 12 Months

Olivette city, Missouri

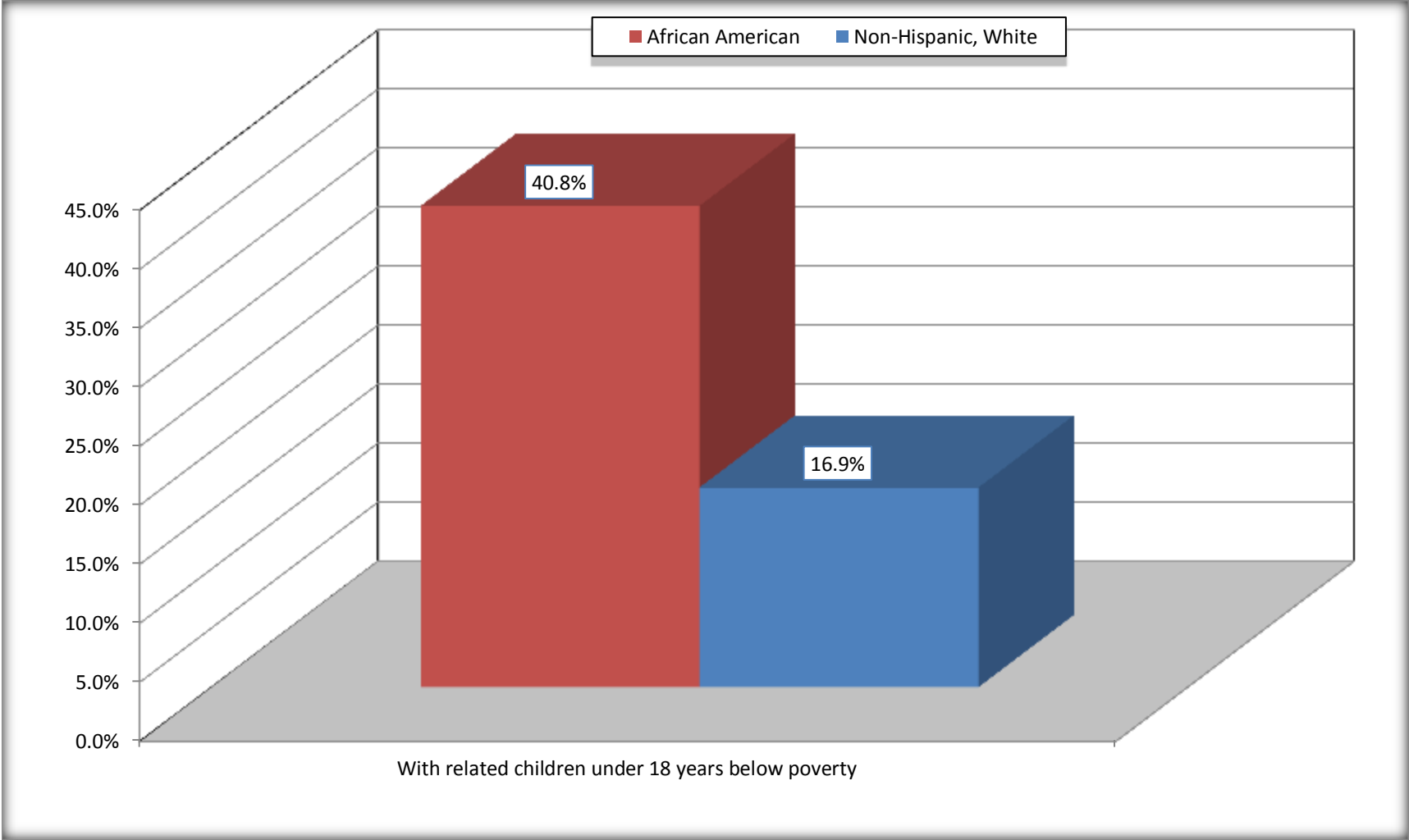


Source: B17010. POVERTY STATUS IN THE PAST 12 MONTHS OF FAMILIES BY FAMILY TYPE BY PRESENCE OF RELATED CHILDREN UNDER 18 YEARS

Data Set: 2008-2012 American Community Survey 5-Year Estimates

Female-headed Households with Related Children Below Poverty in the Past 12 Months

Olivette city, Missouri



Source: B17010. POVERTY STATUS IN THE PAST 12 MONTHS OF FAMILIES BY FAMILY TYPE BY PRESENCE OF RELATED CHILDREN UNDER 18 YEARS

Data Set: 2008-2012 American Community Survey 5-Year Estimates

B17020 POVERTY STATUS IN THE PAST 12 MONTHS BY AGE - Universe: POPULATION FOR WHOM POVERTY STATUS IS DETERMINED

Data Set: 2008-2012 American Community Survey 5-Year Estimates

	Olivette city, Missouri					
	African American	Margin of Error (+/-)	% of AA By Age	White, Not Hispanic	Margin of Error (+/-)	% of NHW By Age
Total:	1,460	282	100.0%	4,849	409	100.0%
Income in the past 12 months below poverty level:	74	54	5.1%	239	123	4.9%
Under 18 years	29	NC	10.4%	57	NC	5.2%
18 to 64 years	20	22	2.3%	161	87	5.5%
65 years and over	25	NC	7.8%	21	NC	2.5%
Income in the past 12 months at or above poverty level:	1,386	279	94.9%	4,610	394	95.1%
Under 18 years	250	NC	89.6%	1,040	NC	94.8%
18 to 64 years	841	183	97.7%	2,767	265	94.5%
65 years and over	295	NC	92.2%	803	NC	97.5%

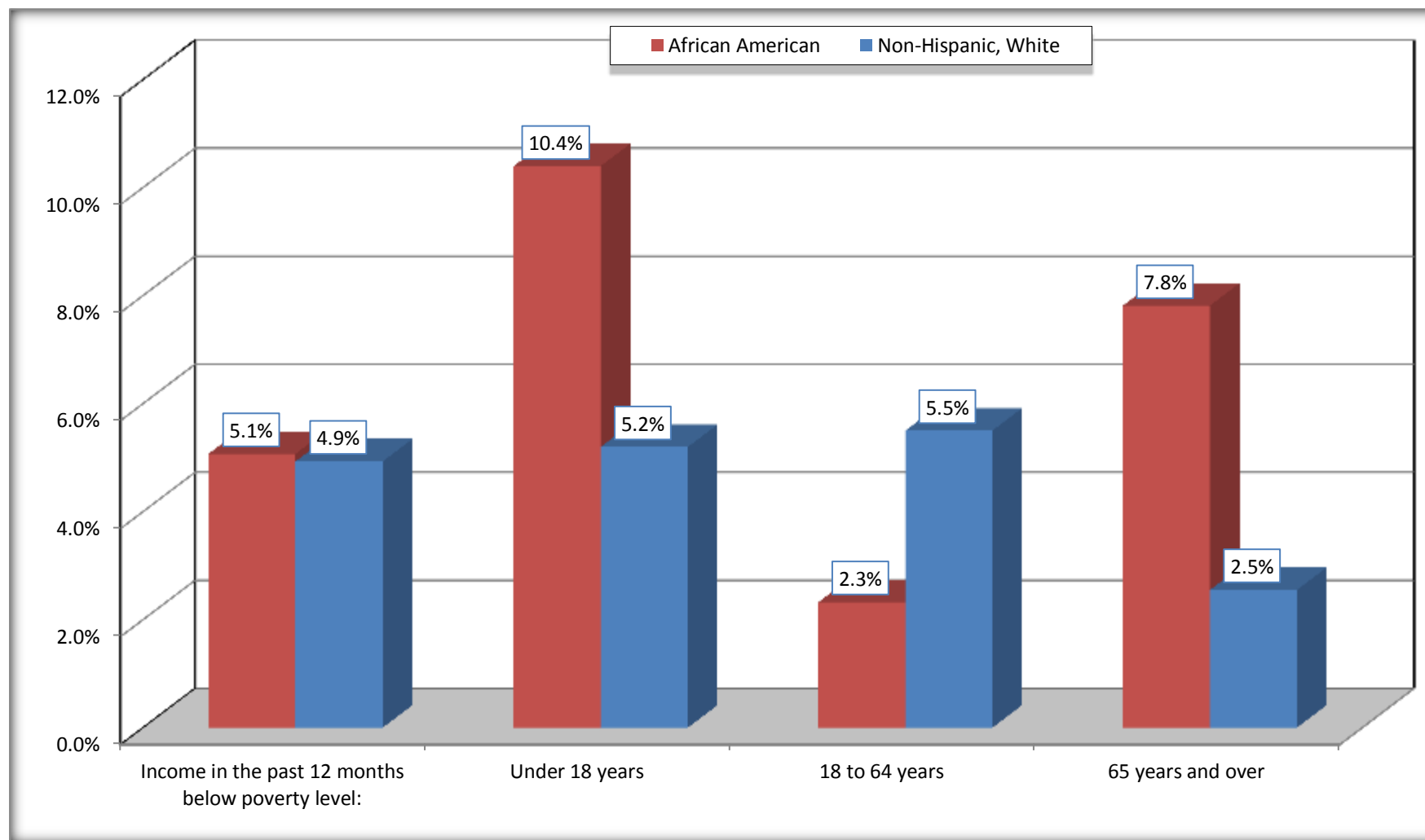
Source: U.S. Census Bureau, 2008-2012 American Community Survey

For information on confidentiality protection, sampling error, nonsampling error, and definitions, see Survey Methodology.

<http://www.census.gov/acs/www/UseData/index.htm>

Population Below Poverty in the Past 12 Months

Olivette city, Missouri



Source: B17020 POVERTY STATUS IN THE PAST 12 MONTHS BY AGE - Universe: POPULATION FOR WHOM POVERTY STATUS IS DETERMINED
Data Set: 2008-2012 American Community Survey 5-Year Estimates

B19001. HOUSEHOLD INCOME IN THE PAST 12 MONTHS (IN 2010 INFLATION-ADJUSTED DOLLARS)

Data Set: 2008-2012 American Community Survey 5-Year Estimates

	Olivette city, Missouri					
	African American	Margin of Error (+/-)	% of AA Total	White, Not Hispanic	Margin of Error (+/-)	% of NHW Total
Total:	691	142	100.0%	2,093	176	100.0%
Less than \$ 10,000	25	21	3.6%	70	53	3.3%
\$ 10,000 to \$ 14,999	21	23	3.0%	38	30	1.8%
\$ 15,000 to \$ 24,999	115	NC	16.6%	77	NC	3.7%
\$ 25,000 to \$ 34,999	9	NC	1.3%	152	NC	7.3%
\$ 35,000 to \$ 49,999	78	NC	11.3%	209	NC	10.0%
\$ 50,000 to \$ 74,999	216	NC	31.3%	372	NC	17.8%
\$ 75,000 to \$ 99,999	63	69	9.1%	154	64	7.4%
\$ 100,000 to \$ 149,999	103	NC	14.9%	309	NC	14.8%
\$ 150,000 to \$ 199,999	31	23	4.5%	346	86	16.5%
\$ 200,000 or more	30	38	4.3%	366	86	17.5%

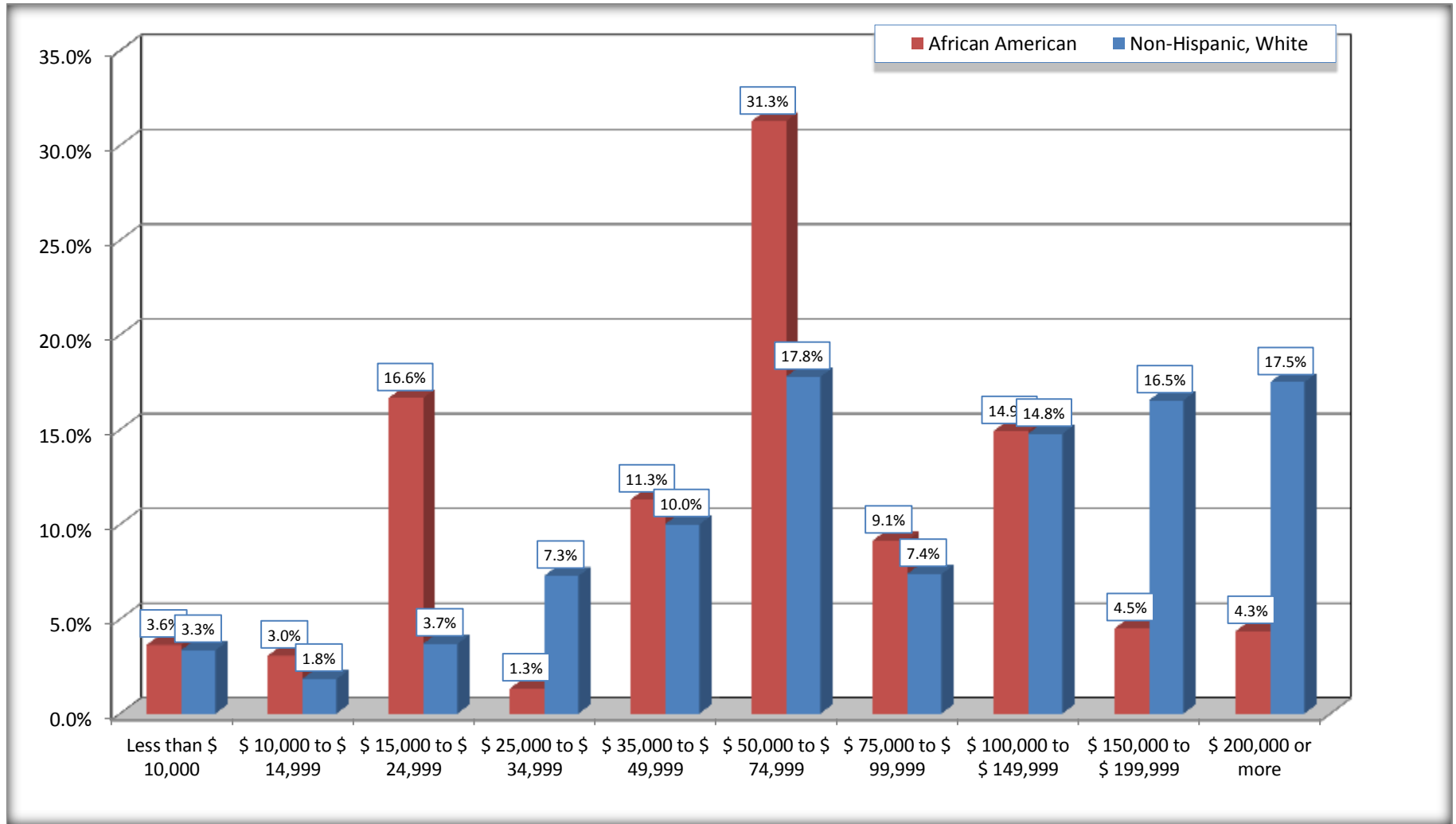
Source: U.S. Census Bureau, 2008-2012 American Community Survey

For information on confidentiality protection, sampling error, nonsampling error, and definitions, see Survey Methodology.

<http://www.census.gov/acs/www/UseData/index.htm>

Household Income in the Past 12 Months

Olivette city, Missouri



Source: B19001. HOUSEHOLD INCOME IN THE PAST 12 MONTHS (IN 2010 INFLATION-ADJUSTED DOLLARS)
Data Set: 2008-2012 American Community Survey 5-Year Estimates

B19013. MEDIAN HOUSEHOLD INCOME IN THE PAST 12 MONTHS (IN 2010 INFLATION-ADJUSTED DOLLARS)

Data Set: 2008-2012 American Community Survey 5-Year Estimates

	Olivette city, Missouri			
	African American	Margin of Error (+/-)	White, Not Hispanic	Margin of Error (+/-)
Median household income in the past 12 months (in 2010 inflation-adjusted dollars)	\$ 55,625	\$ 8,705	\$ 95,341	\$ 22,055

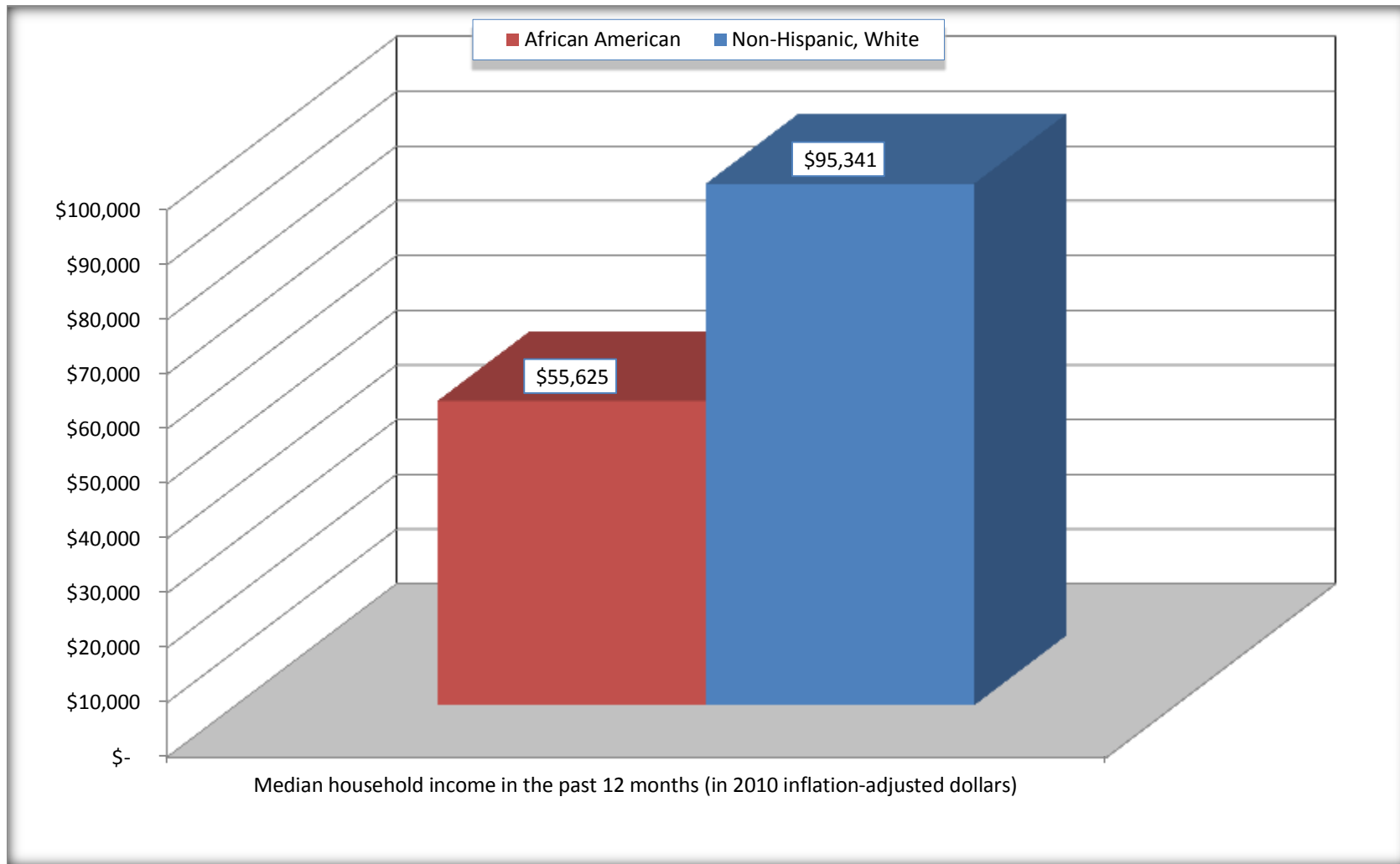
Source: U.S. Census Bureau, 2008-2012 American Community Survey

For information on confidentiality protection, sampling error, nonsampling error, and definitions, see Survey Methodology.

<http://www.census.gov/acs/www/UseData/index.htm>

Median Household Income in the Past 12 Months

Olivette city, Missouri



Source: B19013. MEDIAN HOUSEHOLD INCOME IN THE PAST 12 MONTHS (IN 2010 INFLATION-ADJUSTED DOLLARS)
Data Set: 2008-2012 American Community Survey 5-Year Estimates

B19101. FAMILY INCOME IN THE PAST 12 MONTHS (IN 2010 INFLATION-ADJUSTED DOLLARS)

Data Set: 2008-2012 American Community Survey 5-Year Estimates

	Olivette city, Missouri					
	African American	Margin of Error (+/-)	% of AA Total	White, Not Hispanic	Margin of Error (+/-)	% of NHW Total
Total:	423	117	100.0%	1,461	141	100.0%
Less than \$ 10,000	11	18	2.6%	22	25	1.5%
\$ 10,000 to \$ 14,999	9	14	2.1%	11	17	0.8%
\$ 15,000 to \$ 24,999	78	NC	18.4%	45	NC	3.1%
\$ 25,000 to \$ 34,999	0	NC	0.0%	75	NC	5.1%
\$ 35,000 to \$ 49,999	8	NC	1.9%	105	NC	7.2%
\$ 50,000 to \$ 74,999	181	NC	42.8%	227	NC	15.5%
\$ 100,000 to \$ 149,999	63	NC	14.9%	231	NC	15.8%
\$ 150,000 to \$ 199,999	31	23	7.3%	287	84	19.6%
\$ 200,000 or more	30	38	7.1%	321	75	22.0%

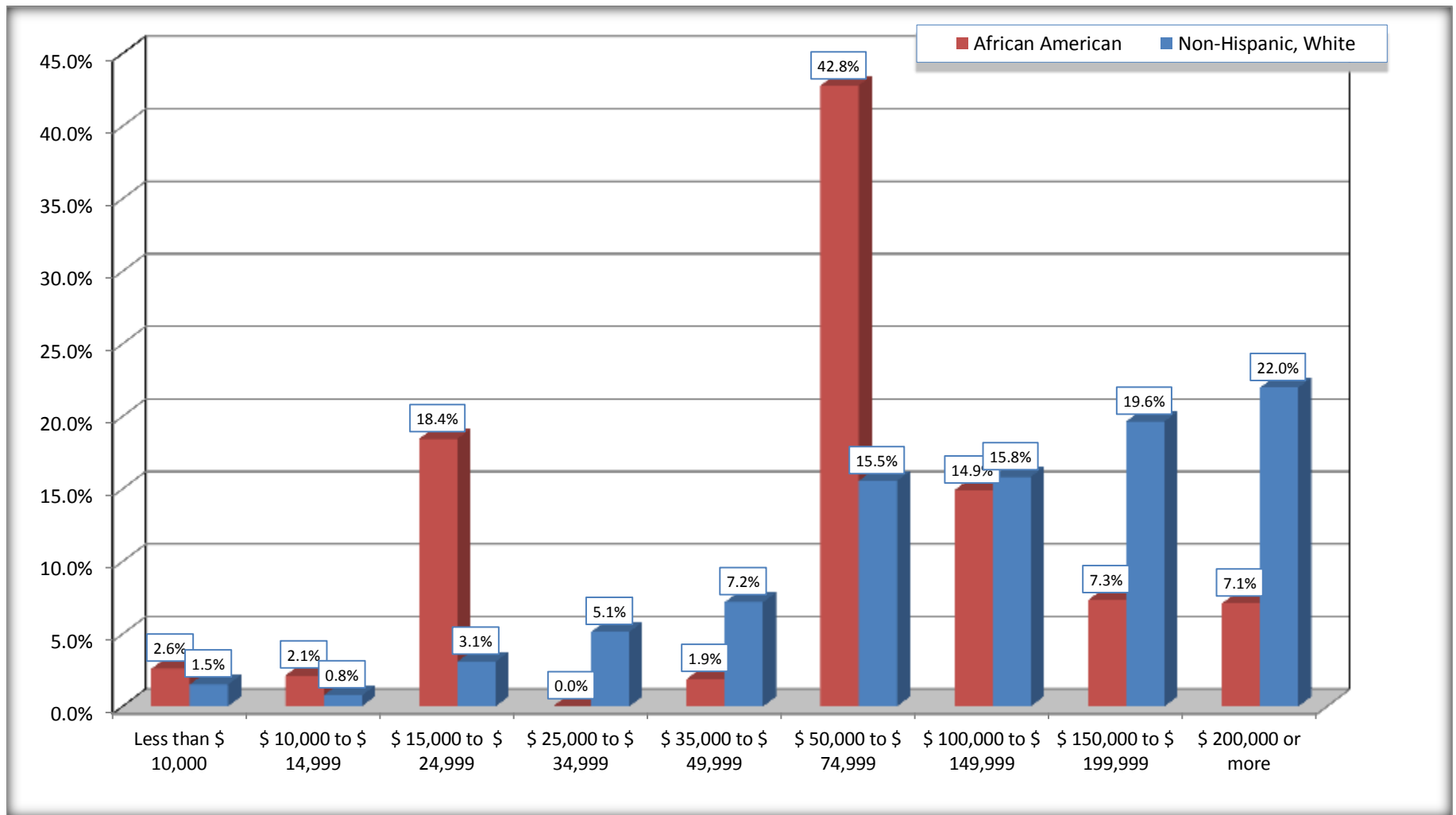
Source: U.S. Census Bureau, 2008-2012 American Community Survey

For information on confidentiality protection, sampling error, nonsampling error, and definitions, see Survey Methodology.

<http://www.census.gov/acs/www/UseData/index.htm>

Family Income in the Past 12 Months

Olivette city, Missouri



Source: B19101. FAMILY INCOME IN THE PAST 12 MONTHS (IN 2010 INFLATION-ADJUSTED DOLLARS)
Data Set: 2008-2012 American Community Survey 5-Year Estimates

B19113. MEDIAN FAMILY INCOME IN THE PAST 12 MONTHS (IN 2010 INFLATION-ADJUSTED DOLLARS)

Data Set: 2008-2012 American Community Survey 5-Year Estimates

	Olivette city, Missouri			
	African American	Margin of Error (+/-)	White, Not Hispanic	Margin of Error (+/-)
Median family income in the past 12 months (in 2010 inflation-adjusted dollars)	\$ 60,450	\$ 9,714	\$ 122,721	\$ 15,611

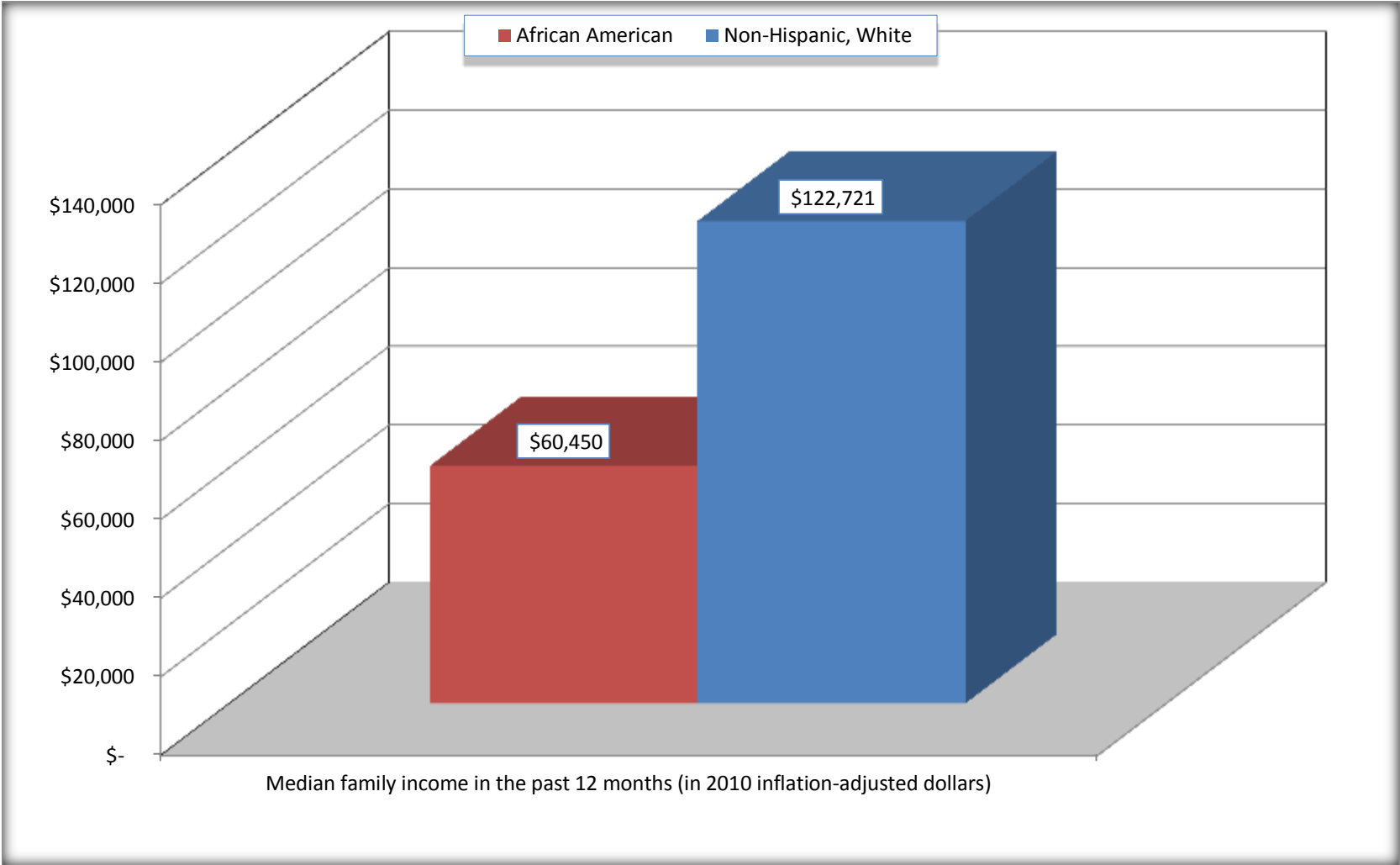
Source: U.S. Census Bureau, 2008-2012 American Community Survey

For information on confidentiality protection, sampling error, nonsampling error, and definitions, see Survey Methodology.

<http://www.census.gov/acs/www/UseData/index.htm>

Median Family Income in the Past 12 Months

Olivette city, Missouri



Source: B19113. MEDIAN FAMILY INCOME IN THE PAST 12 MONTHS (IN 2010 INFLATION-ADJUSTED DOLLARS)
Data Set: 2008-2012 American Community Survey 5-Year Estimates

B19202. MEDIAN NONFAMILY HOUSEHOLD INCOME IN THE PAST 12 MONTHS (IN 2010 INFLATION-ADJUSTED DOLLARS)

Data Set: 2008-2012 American Community Survey 5-Year Estimates

	Olivette city, Missouri			
	African American	Margin of Error (+/-)	White, Not Hispanic	Margin of Error (+/-)
Median nonfamily household income in the past 12 months (in 2010 inflation-adjusted dollars)	\$ 47,778	\$ 20,371	\$ 55,473	\$ 16,478

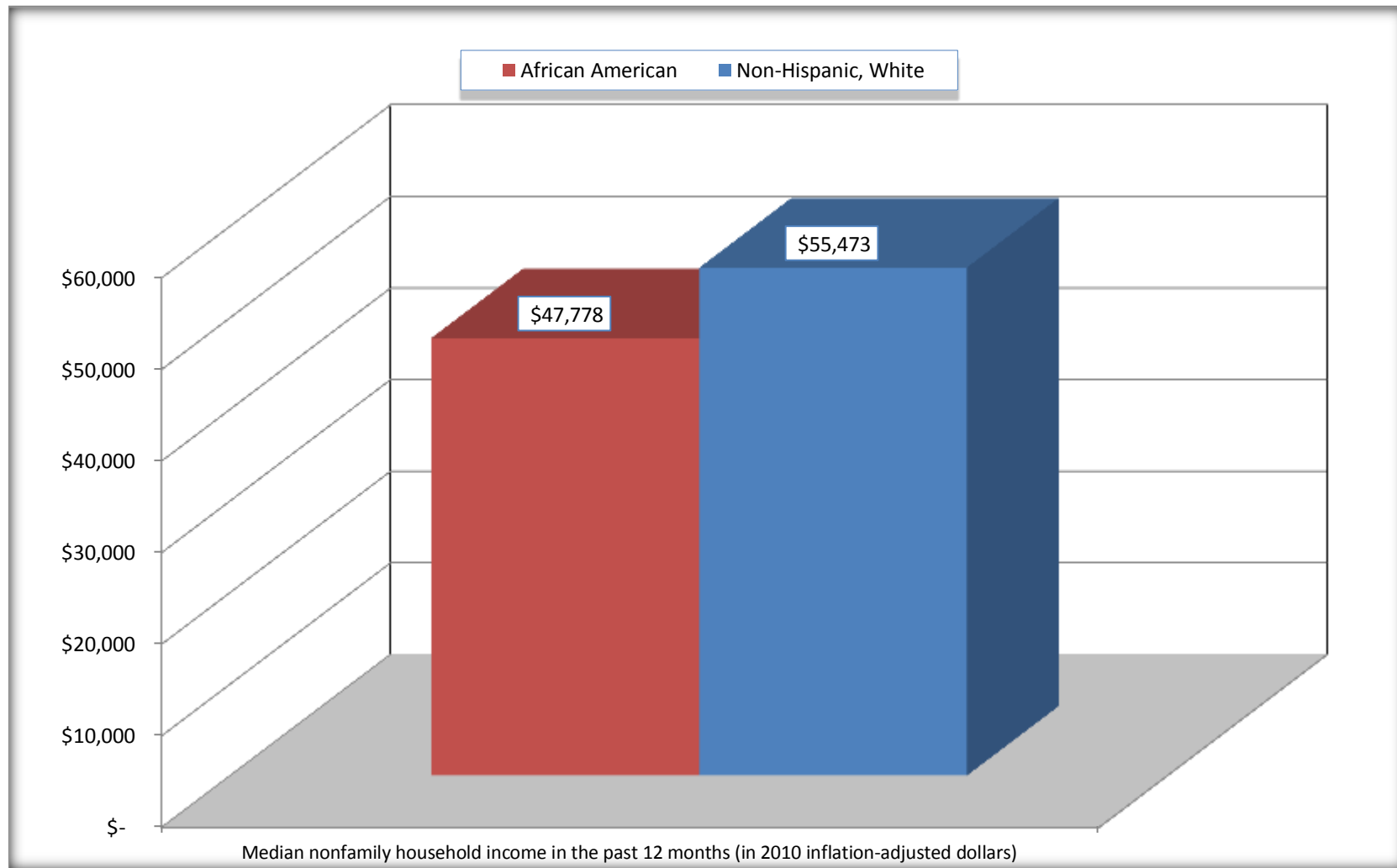
Source: U.S. Census Bureau, 2008-2012 American Community Survey

For information on confidentiality protection, sampling error, nonsampling error, and definitions, see Survey Methodology.

<http://www.census.gov/acs/www/UseData/index.htm>

Median Non-Family Income in the Past 12 Months

Olivette city, Missouri



Source: B19202. MEDIAN NONFAMILY HOUSEHOLD INCOME IN THE PAST 12 MONTHS (IN 2010 INFLATION-ADJUSTED DOLLARS)
Data Set: 2008-2012 American Community Survey 5-Year Estimates

B19301. PER CAPITA INCOME IN THE PAST 12 MONTHS (IN 2010 INFLATION-ADJUSTED DOLLARS)

Data Set: 2008-2012 American Community Survey 5-Year Estimates

	Olivette city, Missouri			
	African American	Margin of Error (+/-)	White, Not Hispanic	Margin of Error (+/-)
Per capita income in the past 12 months (in 2010 inflation-adjusted dollars)	\$ 35,714	\$ 6,799	\$ 57,640	\$ 6,378

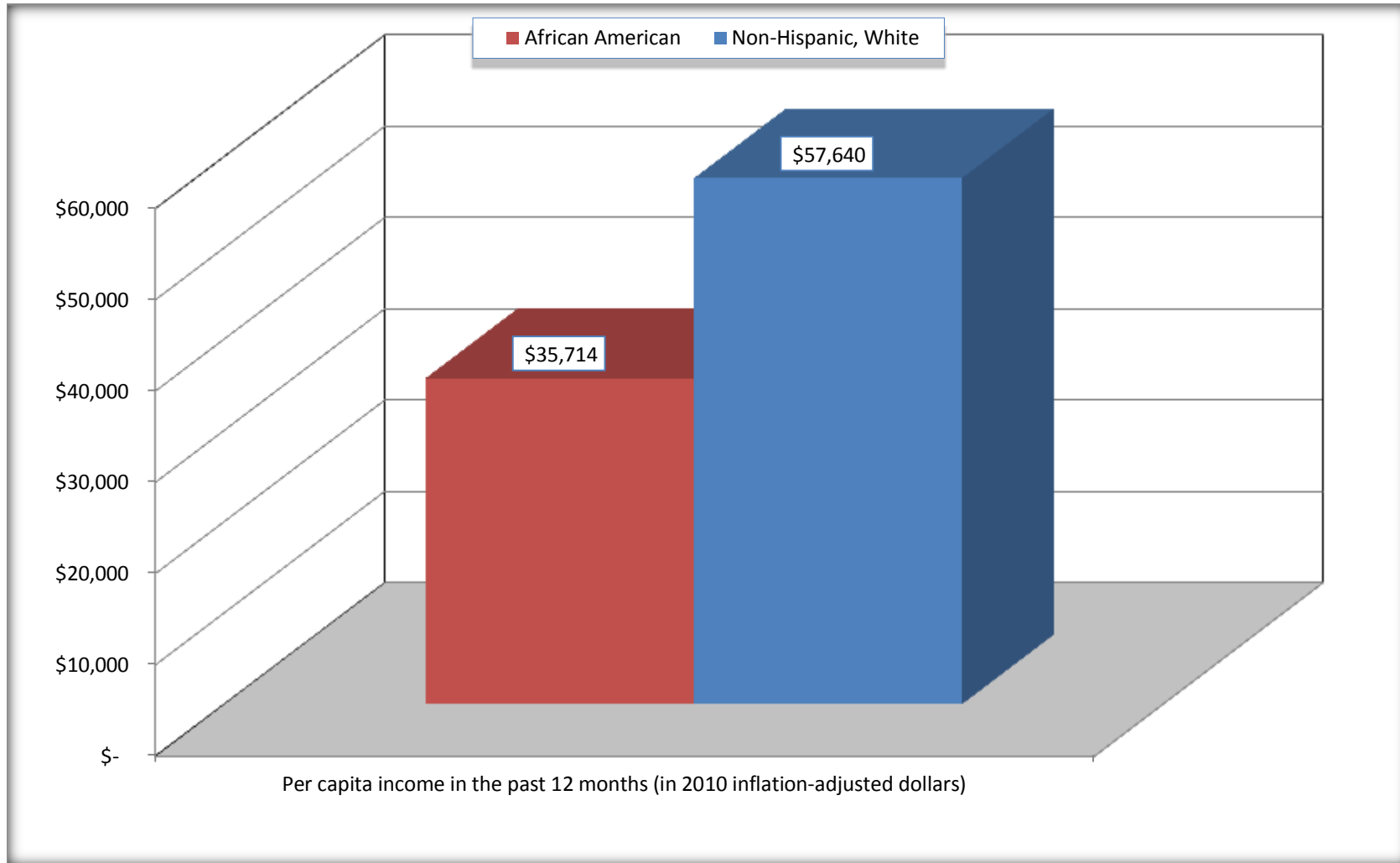
Source: U.S. Census Bureau, 2008-2012 American Community Survey

For information on confidentiality protection, sampling error, nonsampling error, and definitions, see Survey Methodology.

<http://www.census.gov/acs/www/UseData/index.htm>

Per capita Income in the Past 12 Months

Olivette city, Missouri



Source: B19301. PER CAPITA INCOME IN THE PAST 12 MONTHS (IN 2010 INFLATION-ADJUSTED DOLLARS)
Data Set: 2008-2012 American Community Survey 5-Year Estimates

B20017. MEDIAN EARNINGS IN THE PAST 12 MONTHS (IN 2010 INFLATION-ADJUSTED DOLLARS) BY SEX BY WORK EXPERIENCE IN THE PAST 12 MONTHS FOR THE POPULATION 16 YEARS AND OVER WITH EARNINGS IN THE PAST 12 MONTHS

Data Set: 2008-2012 American Community Survey 5-Year Estimates

	Olivette city, Missouri			
	African American	Margin of Error (+/-)	White, Not Hispanic	Margin of Error (+/-)
Median earnings in the past 12 months (in 2010 inflation-adjusted dollars) --				
Total:	\$ 35,962	\$ 17,536	\$ 42,041	\$ 5,903
Male --				
Total	\$ 31,875	\$ 22,032	\$ 64,176	\$ 10,618
Worked full-time, year-round in the past 12 months	\$ 43,188	\$ 7,637	\$ 91,776	\$ 15,060
Other	\$ 13,304	\$ 4,180	\$ 17,639	\$ 6,778
Female --				
Total	\$ 37,019	\$ 20,510	\$ 31,959	\$ 6,327
Worked full-time, year-round in the past 12 months	\$ 50,278	\$ 14,627	\$ 53,722	\$ 9,518
Other	\$ 4,683	\$ 39,520	\$ 14,705	\$ 6,102

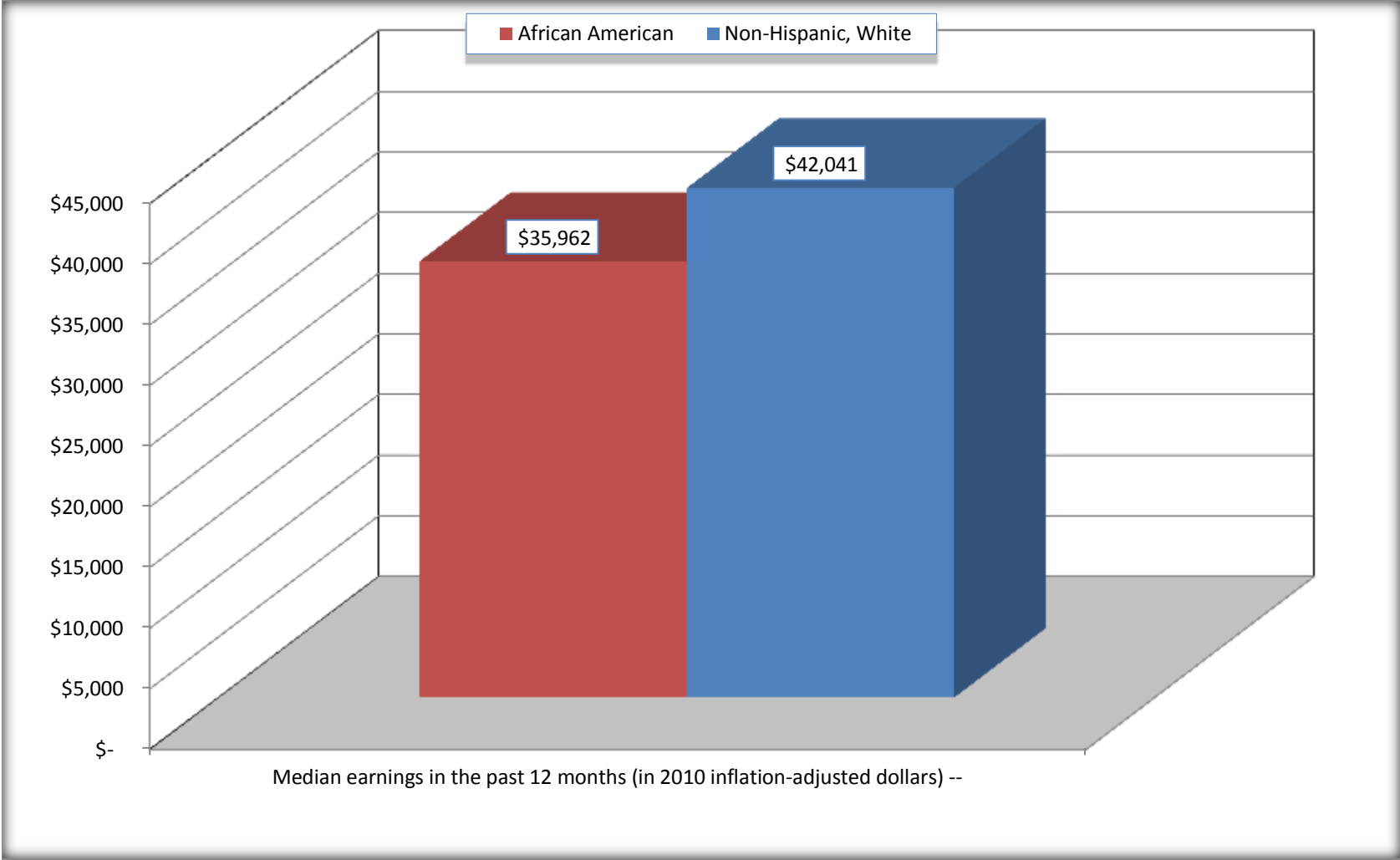
Source: U.S. Census Bureau, 2008-2012 American Community Survey

For information on confidentiality protection, sampling error, nonsampling error, and definitions, see Survey Methodology.

<http://www.census.gov/acs/www/UseData/index.htm>

Median earnings in the Past 12 Months (16 Years and Over with Earnings)

Olivette city, Missouri



Source: B20017. MEDIAN EARNINGS IN THE PAST 12 MONTHS (IN 2010 INFLATION-ADJUSTED DOLLARS) BY SEX BY WORK EXPERIENCE IN THE PAST 12 MONTHS FOR THE POPULATION 16 YEARS AND OVER WITH EARNINGS IN THE PAST 12 MONTHS
Data Set: 2008-2012 American Community Survey 5-Year Estimates

B20005. SEX BY WORK EXPERIENCE IN THE PAST 12 MONTHS BY EARNINGS IN THE PAST 12 MONTHS (IN 2010 INFLATION-ADJUSTED DOLLARS) FOR THE POPULATION 16 YEARS AND OVER

Data Set: 2008-2012 American Community Survey 5-Year Estimates

	Olivette city, Missouri					
	African American	Margin of Error (+/-)	% of AA Total	White, Not Hispanic	Margin of Error (+/-)	% of NHW Total
Total:	1,210	249	100.0%	3,876	342	100.0%
Worked full-time, year-round in the past 12 months:	598	NC	49.4%	1,574	NC	40.6%
No earnings	0	NC	0.0%	0	NC	0.0%
With earnings:	598	NC	49.4%	1,574	NC	40.6%
\$ 1 to \$ 9,999 or loss	14	NC	1.2%	14	NC	0.4%
\$ 10,000 to \$ 19,999	31	NC	2.6%	18	NC	0.5%
\$ 20,000 to \$ 29,999	143	NC	11.8%	120	NC	3.1%
\$ 30,000 to \$ 49,999	139	NC	11.5%	329	NC	8.5%
\$ 50,000 to \$ 74,999	113	NC	9.3%	371	NC	9.6%
\$ 75,000 or more	158	NC	13.1%	722	NC	18.6%
Other:	612	NC	50.6%	2,302	NC	59.4%
No earnings	320	NC	26.4%	1,116	NC	28.8%
With earnings: less than full time, year-round	292	NC	24.1%	1,186	NC	30.6%
Male:	490	130	40.5%	1,784	185	46.0%
Worked full-time, year-round in the past 12 months:	302	97	25.0%	912	131	23.5%
No earnings	0	16	0.0%	0	16	0.0%
With earnings:	302	97	25.0%	912	131	23.5%
\$ 1 to \$ 9,999 or loss	14	NC	1.2%	7	NC	0.2%
\$ 10,000 to \$ 19,999	23	NC	1.9%	11	NC	0.3%
\$ 20,000 to \$ 29,999	61	NC	5.0%	44	NC	1.1%
\$ 30,000 to \$ 49,999	82	NC	6.8%	117	NC	3.0%
\$ 50,000 to \$ 74,999	50	NC	4.1%	182	NC	4.7%
\$ 75,000 or more	72	NC	6.0%	551	NC	14.2%

	Olivette city, Missouri					
	African American	Margin of Error (+/-)	% of AA Total	White, Not Hispanic	Margin of Error (+/-)	% of NHW Total
Other:	188	81	15.5%	872	170	22.5%
No earnings	73	44	6.0%	371	97	9.6%
With earnings:	115	77	9.5%	501	117	12.9%
Female:	720	202	59.5%	2,092	221	54.0%
Worked full-time, year-round in the past 12 months:	296	85	24.5%	662	141	17.1%
No earnings	0	16	0.0%	0	16	0.0%
With earnings:	296	85	24.5%	662	141	17.1%
\$ 1 to \$ 9,999 or loss	0	NC	0.0%	7	NC	0.2%
\$ 10,000 to \$ 19,999	8	NC	0.7%	7	NC	0.2%
\$ 20,000 to \$ 29,999	82	NC	6.8%	76	NC	2.0%
\$ 30,000 to \$ 49,999	57	NC	4.7%	212	NC	5.5%
\$ 50,000 to \$ 74,999	63	NC	5.2%	189	NC	4.9%
\$ 75,000 or more	86	NC	7.1%	171	NC	4.4%
Other:	424	172	35.0%	1,430	173	36.9%
No earnings	247	98	20.4%	745	125	19.2%
With earnings:	177	118	14.6%	685	149	17.7%

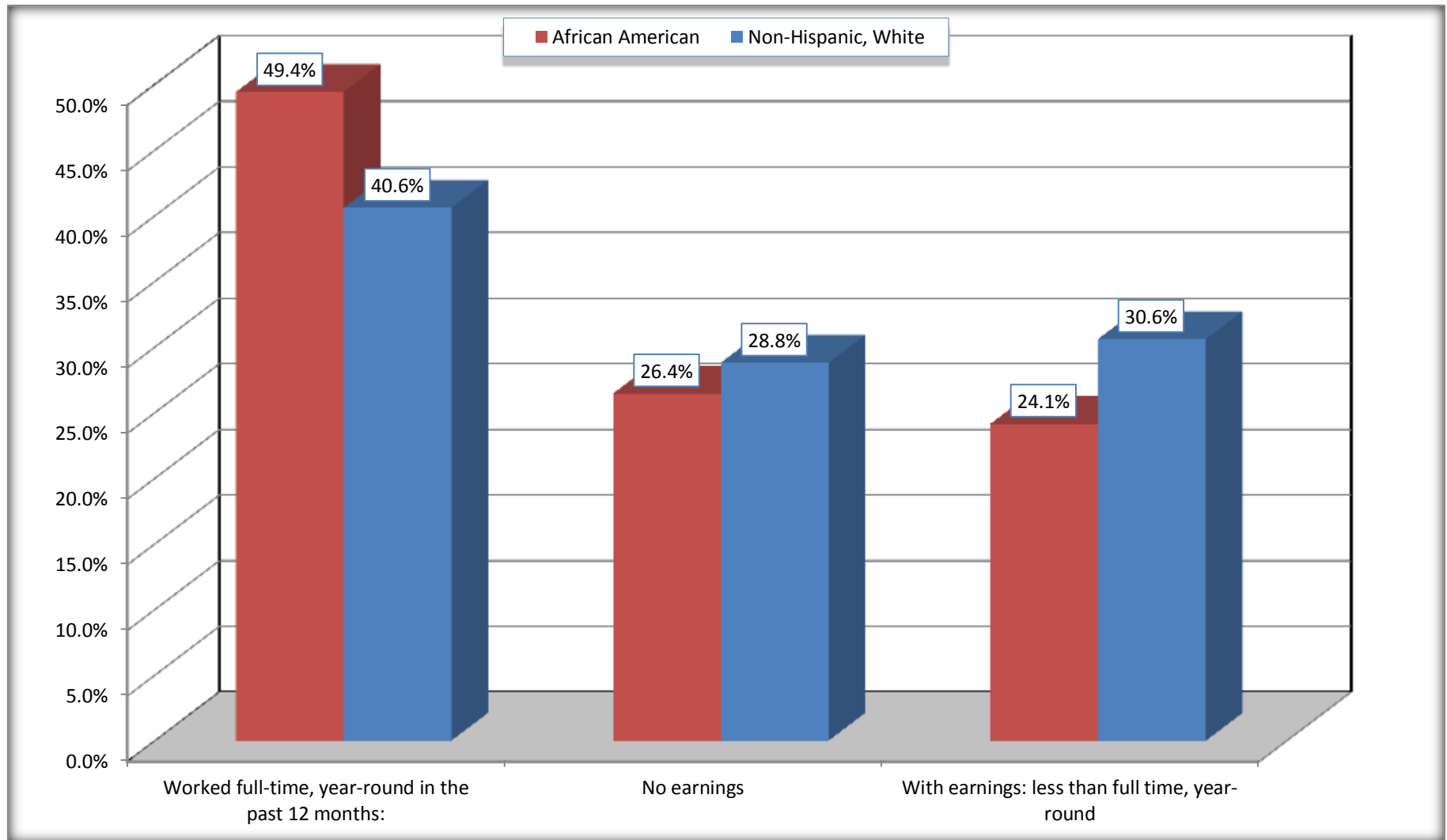
Source: U.S. Census Bureau, 2008-2012 American Community Survey

For information on confidentiality protection, sampling error, nonsampling error, and definitions, see Survey Methodology.

<http://www.census.gov/acs/www/UseData/index.htm>

Employment and Earnings in in the Past 12 Months (16 Years and Over)

Olivette city, Missouri



Source: B20005. SEX BY WORK EXPERIENCE IN THE PAST 12 MONTHS BY EARNINGS IN THE PAST 12 MONTHS (IN 2010 INFLATION-ADJUSTED DOLLARS) FOR THE POPULATION 16 YEARS AND OVER

Data Set: 2008-2012 American Community Survey 5-Year Estimates

C21001. SEX BY AGE BY VETERAN STATUS FOR THE CIVILIAN POPULATION 18 YEARS AND OVER

Data Set: 2008-2012 American Community Survey 5-Year Estimates

	Olivette city, Missouri					
	African American	Margin of Error (+/-)	% of AA Total	White, Not Hispanic	Margin of Error (+/-)	% of NHW Total
Total:	1,150	239	100.0%	3,752	317	100.0%
Veteran	147	NC	12.8%	284	NC	7.6%
Nonveteran	1,003	NC	87.2%	3,468	NC	92.4%
Male:	430	128	37.4%	1,765	179	47.0%
18 to 64 years:	347	120	30.2%	1,397	152	37.2%
Veteran	54	40	4.7%	63	37	1.7%
Nonveteran	293	118	25.5%	1,334	149	35.6%
65 years and over:	83	45	7.2%	368	80	9.8%
Veteran	83	45	7.2%	198	61	5.3%
Nonveteran	0	16	0.0%	170	52	4.5%
Female:	720	202	62.6%	1,987	197	53.0%
18 to 64 years:	483	148	42.0%	1,531	189	40.8%
Veteran	10	16	0.9%	23	25	0.6%
Nonveteran	473	147	41.1%	1,508	179	40.2%
65 years and over:	237	95	20.6%	456	84	12.2%
Veteran	0	16	0.0%	0	16	0.0%
Nonveteran	237	95	20.6%	456	84	12.2%

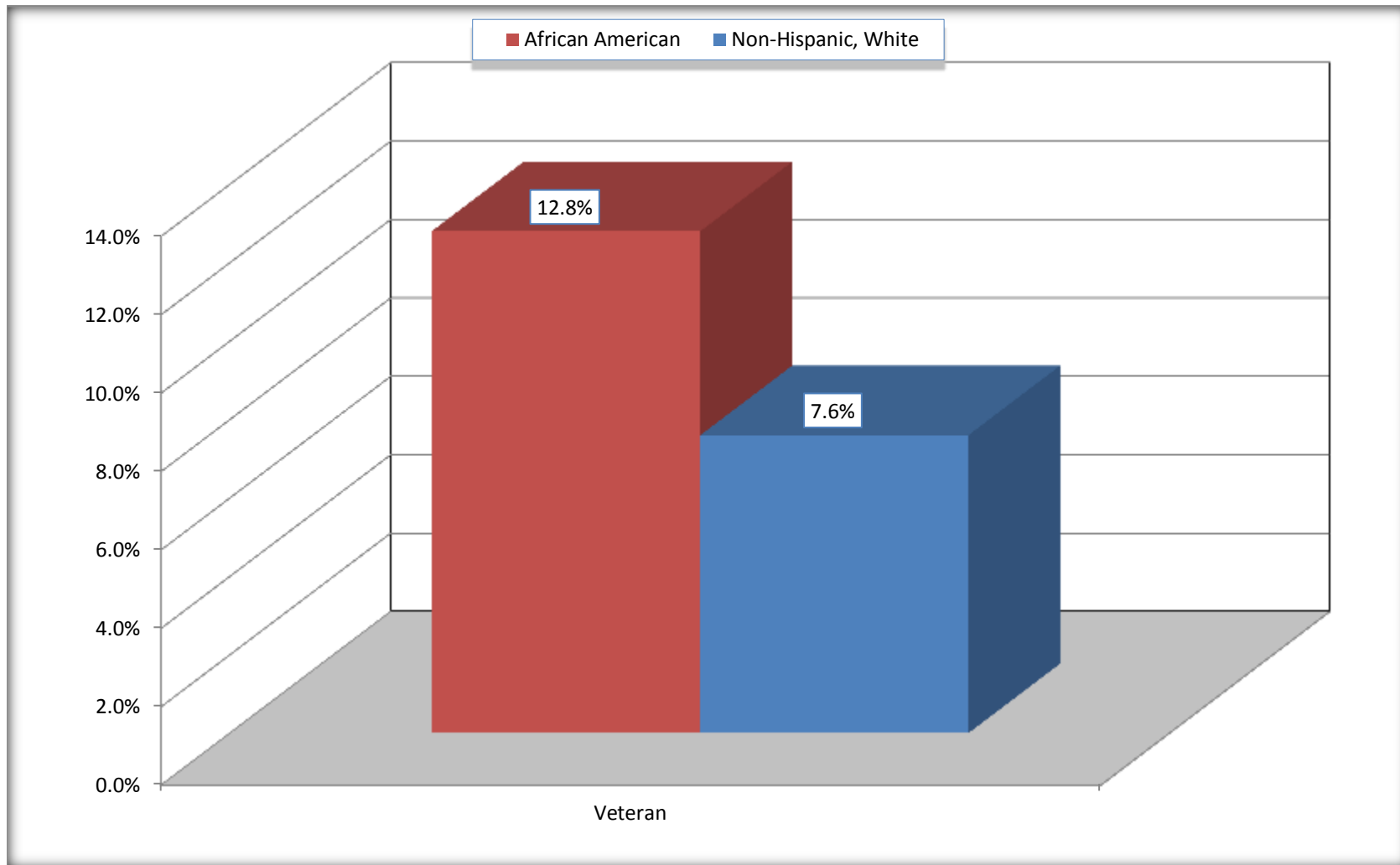
Source: U.S. Census Bureau, 2008-2012 American Community Survey

For information on confidentiality protection, sampling error, nonsampling error, and definitions, see Survey Methodology.

<http://www.census.gov/acs/www/UseData/index.htm>

Veterans in the Civilian Population 18 Years and Over

Olivette city, Missouri



Source: C21001. SEX BY AGE BY VETERAN STATUS FOR THE CIVILIAN POPULATION 18 YEARS AND OVER
Data Set: 2008-2012 American Community Survey 5-Year Estimates

B22005. RECEIPT OF FOOD STAMPS/SNAP IN THE PAST 12 MONTHS BY RACE OF HOUSEHOLDER

Data Set: 2008-2012 American Community Survey 5-Year Estimates

	Olivette city, Missouri					
	African American	Margin of Error (+/-)	% of AA Total	White, Not Hispanic	Margin of Error (+/-)	% of NHW Total
Total:	691	142	100.0%	2,093	176	100.0%
HH received Food Stamps/SNAP in the past 12 months	80	77	11.6%	61	44	2.9%
HH did not receive Food Stamps/SNAP in the past 12 months	611	137	88.4%	2,032	179	97.1%

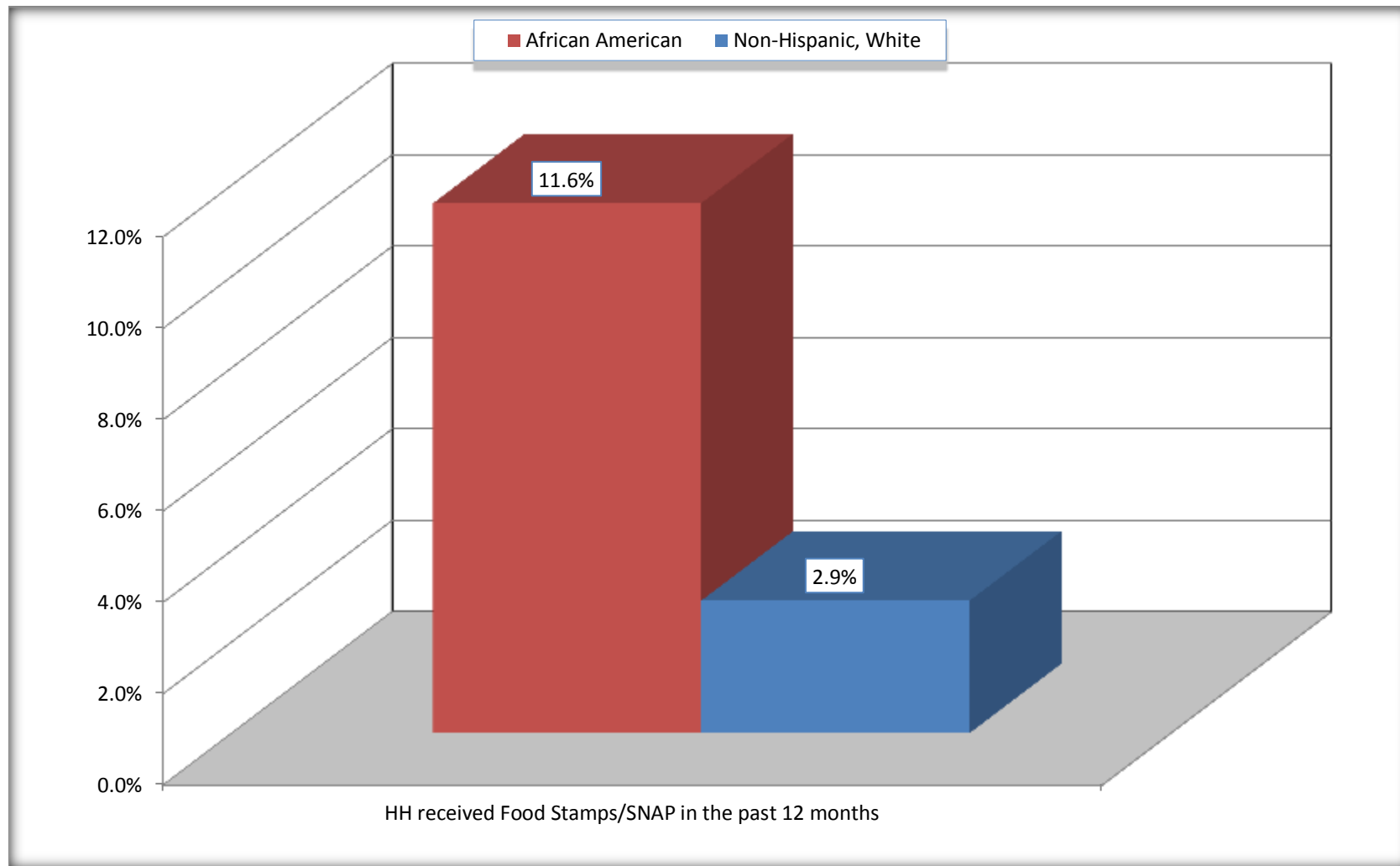
Source: U.S. Census Bureau, 2008-2012 American Community Survey

For information on confidentiality protection, sampling error, nonsampling error, and definitions, see Survey Methodology.

<http://www.census.gov/acs/www/UseData/index.htm>

Receipt of Food Stamps/SNAP in the Past 12 Months by Household

Olivette city, Missouri



Source: B22005. RECEIPT OF FOOD STAMPS/SNAP IN THE PAST 12 MONTHS BY RACE OF HOUSEHOLDER
Data Set: 2008-2012 American Community Survey 5-Year Estimates

C23002. SEX BY AGE BY EMPLOYMENT STATUS FOR THE POPULATION 16 YEARS AND OVER

Data Set: 2008-2012 American Community Survey 5-Year Estimates

	Olivette city, Missouri					
	African American	Margin of Error (+/-)	% of AA Total	White, Not Hispanic	Margin of Error (+/-)	% of NHW Total
Total:	1,210	249	100.0%	3,876	342	100.0%
In labor force:	861	NC	71.2%	2,630	NC	67.9%
In Armed Forces	31	NC	2.6%	0	NC	0.0%
Civilian:	751	NC	62.1%	2,404	NC	62.0%
Employed	797	NC	65.9%	2,444	NC	63.1%
Unemployed	33	NC	2.7%	186	NC	4.8%
Not in labor force	349	NC	28.8%	1,246	NC	32.1%
Male:	490	130	40.5%	1,784	185	46.0%
16 to 64 years:	407	125	33.6%	1,416	158	36.5%
In labor force:	348	114	28.8%	1,247	145	32.2%
In Armed Forces	31	38	2.6%	0	16	0.0%
Civilian:	317	113	26.2%	1,247	145	32.2%
Employed	317	113	26.2%	1,166	142	30.1%
Unemployed	0	16	0.0%	81	59	2.1%
Not in labor force	59	38	4.9%	169	70	4.4%
65 years and over:	83	45	6.9%	368	80	9.5%
In labor force:	28	26	2.3%	129	44	3.3%
Employed	28	26	2.3%	129	44	3.3%
Unemployed	0	16	0.0%	0	16	0.0%
Not in labor force	55	39	4.5%	239	69	6.2%

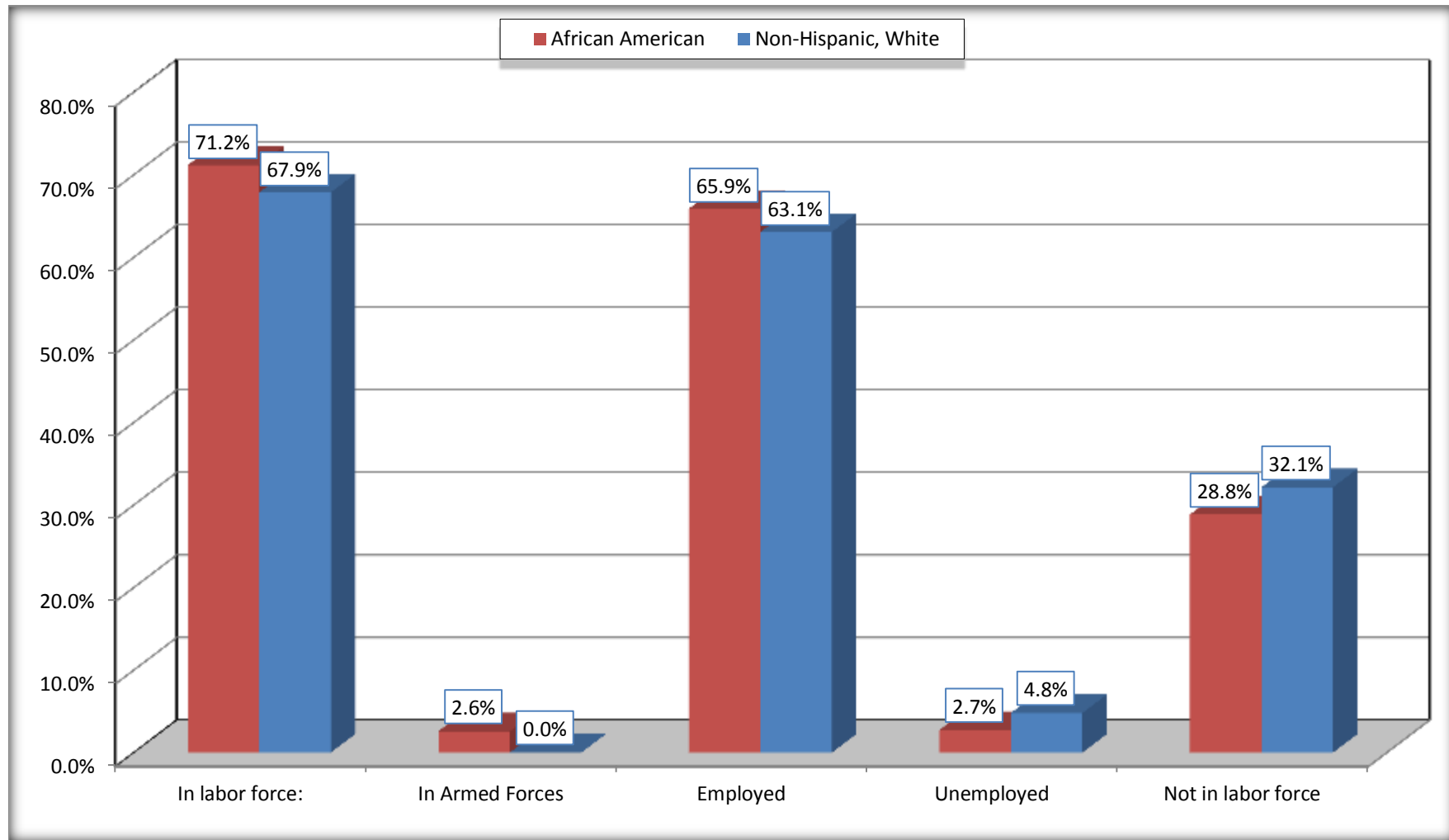
	Olivette city, Missouri					
	African American	Margin of Error (+/-)	% of AA Total	White, Not Hispanic	Margin of Error (+/-)	% of NHW Total
Female:	720	202	59.5%	2,092	221	54.0%
16 to 64 years:	483	148	39.9%	1,636	209	42.2%
In labor force:	434	143	35.9%	1,157	190	29.9%
In Armed Forces	0	16	0.0%	0	16	0.0%
Civilian:	434	143	35.9%	1,157	190	29.9%
Employed	413	137	34.1%	1,052	177	27.1%
Unemployed	21	24	1.7%	105	63	2.7%
Not in labor force	49	42	4.0%	479	131	12.4%
65 years and over:	237	95	19.6%	456	84	11.8%
In labor force:	51	49	4.2%	97	43	2.5%
Employed	39	45	3.2%	97	43	2.5%
Unemployed	12	20	1.0%	0	16	0.0%
Not in labor force	186	86	15.4%	359	71	9.3%

Source: U.S. Census Bureau, 2008-2012 American Community Survey

For information on confidentiality protection, sampling error, nonsampling error, and definitions, see Survey Methodology.
<http://www.census.gov/acs/www/UseData/index.htm>

Employment Status for the Population 16 years and over

Olivette city, Missouri

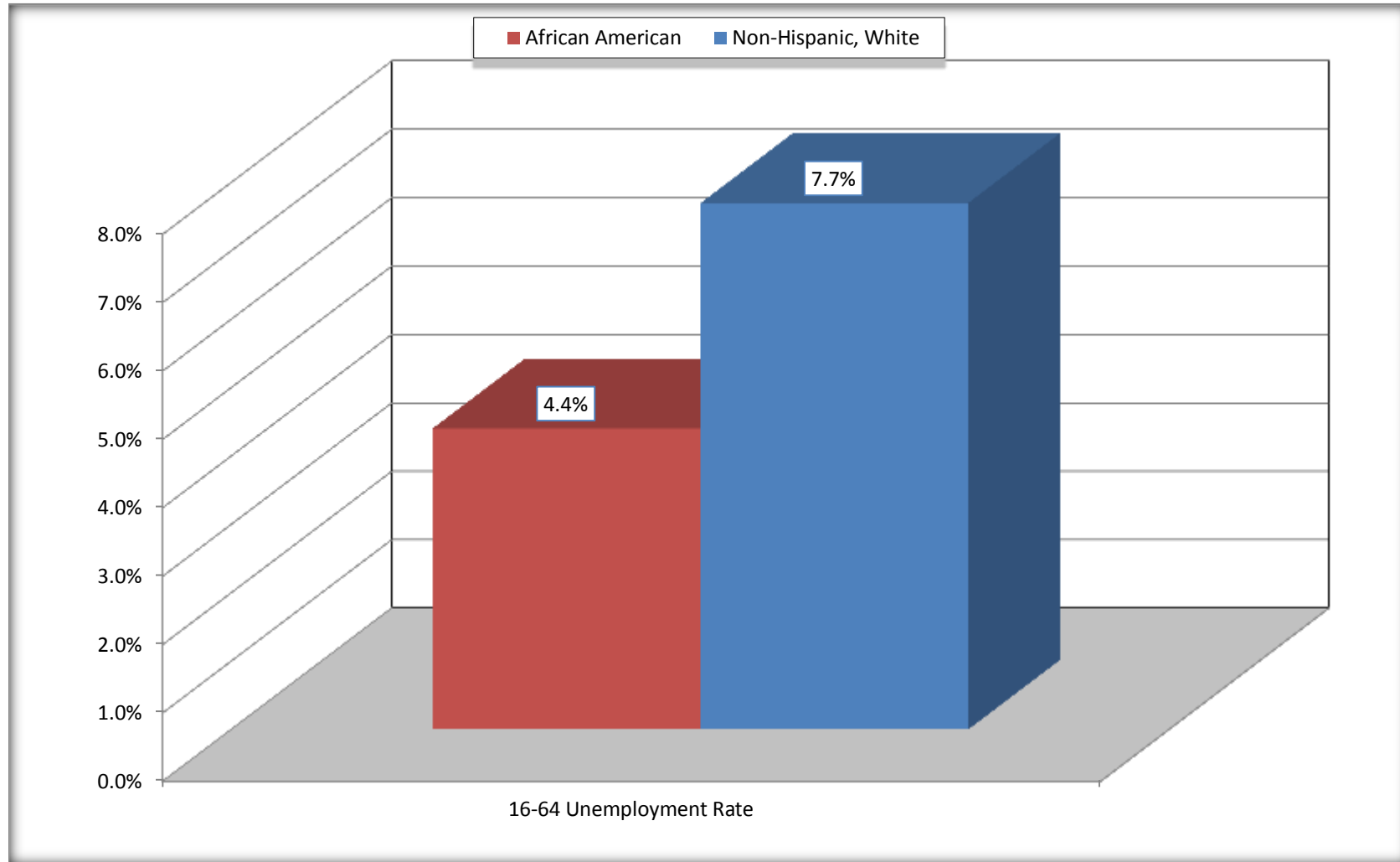


Source: C23002. SEX BY AGE BY EMPLOYMENT STATUS FOR THE POPULATION 16 YEARS AND OVER

Data Set: 2008-2012 American Community Survey 5-Year Estimates

Unemployment of Working Age Population (Ages 16 to 64) (As a Percent of 16-64 Civilian Labor Force)

Olivette city, Missouri



Source: C23002. SEX BY AGE BY EMPLOYMENT STATUS FOR THE POPULATION 16 YEARS AND OVER
Data Set: 2008-2012 American Community Survey 5-Year Estimates

C24010. SEX BY OCCUPATION FOR THE CIVILIAN EMPLOYED POPULATION 16 YEARS AND OVER

Data Set: 2008-2012 American Community Survey 5-Year Estimates

	Olivette city, Missouri					
	African American	Margin of Error (+/-)	% of AA Total	White, Not Hispanic	Margin of Error (+/-)	% of NHW Total
Total:	797	181	100.0%	2,444	262	100.0%
Management, professional, and related occupations	312	NC	39.1%	1,489	NC	60.9%
Service occupations	126	NC	15.8%	217	NC	8.9%
Sales and office occupations	175	NC	22.0%	589	NC	24.1%
Natural resources, construction, and maintenance occupations:	36	NC	4.5%	55	NC	2.3%
Production, transportation, and material moving occupations	148	NC	18.6%	94	NC	3.8%
Male:	345	116	43.3%	1,295	146	53.0%
Management, business, science, and arts occupations:	125	84	15.7%	810	111	33.1%
Service occupations	47	33	5.9%	110	59	4.5%
Sales and office occupations	68	57	8.5%	250	81	10.2%
Natural resources, construction, and maintenance occupations:	36	30	4.5%	55	30	2.3%
Production, transportation, and material moving occupations	69	53	8.7%	70	52	2.9%
Female:	452	146	56.7%	1,149	180	47.0%
Management, professional, and related occupations	187	84	23.5%	679	128	27.8%
Service occupations	79	66	9.9%	107	66	4.4%
Sales and office occupations	107	50	13.4%	339	108	13.9%
Natural resources, construction, and maintenance occupations:	0	16	0.0%	0	16	0.0%
Production, transportation, and material moving occupations	79	84	9.9%	24	22	1.0%

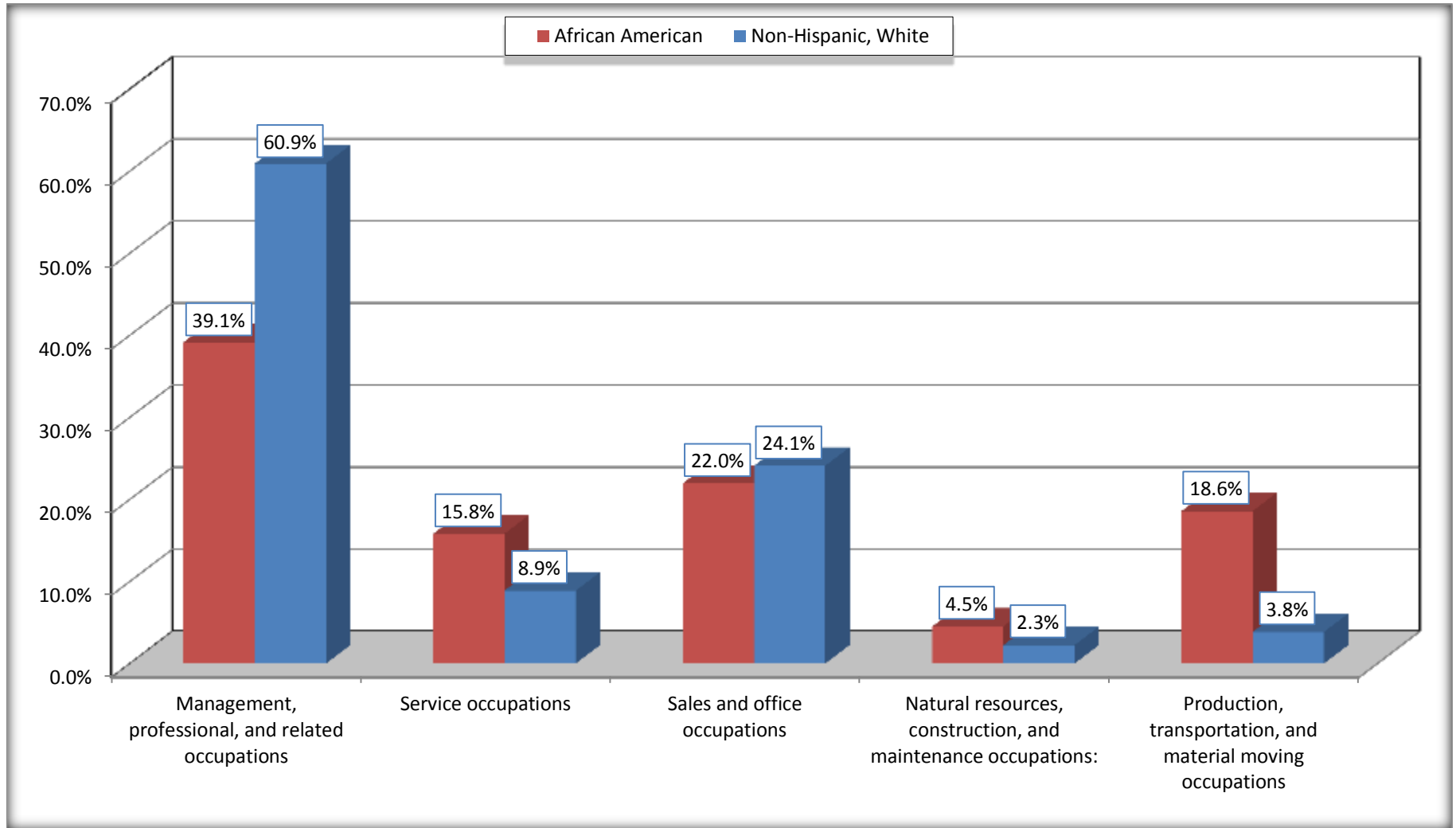
Source: U.S. Census Bureau, 2008-2012 American Community Survey

For information on confidentiality protection, sampling error, nonsampling error, and definitions, see Survey Methodology.

<http://www.census.gov/acs/www/UseData/index.htm>

Occupation for the Civilian Employed 16 Years and Over Population

Olivette city, Missouri



Source: C24010. SEX BY OCCUPATION FOR THE CIVILIAN EMPLOYED POPULATION 16 YEARS AND OVER
Data Set: 2008-2012 American Community Survey 5-Year Estimates

B25003. TENURE - Universe: OCCUPIED HOUSING UNITS

Data Set: 2008-2012 American Community Survey 5-Year Estimates

	Olivette city, Missouri					
	African American	Margin of Error (+/-)	% of AA Total	White, Not Hispanic	Margin of Error (+/-)	% of NHW Total
Total:	691	142	100.0%	2,093	176	100.0%
Owner occupied	423	105	61.2%	1,862	159	89.0%
Renter occupied	268	130	38.8%	231	96	11.0%

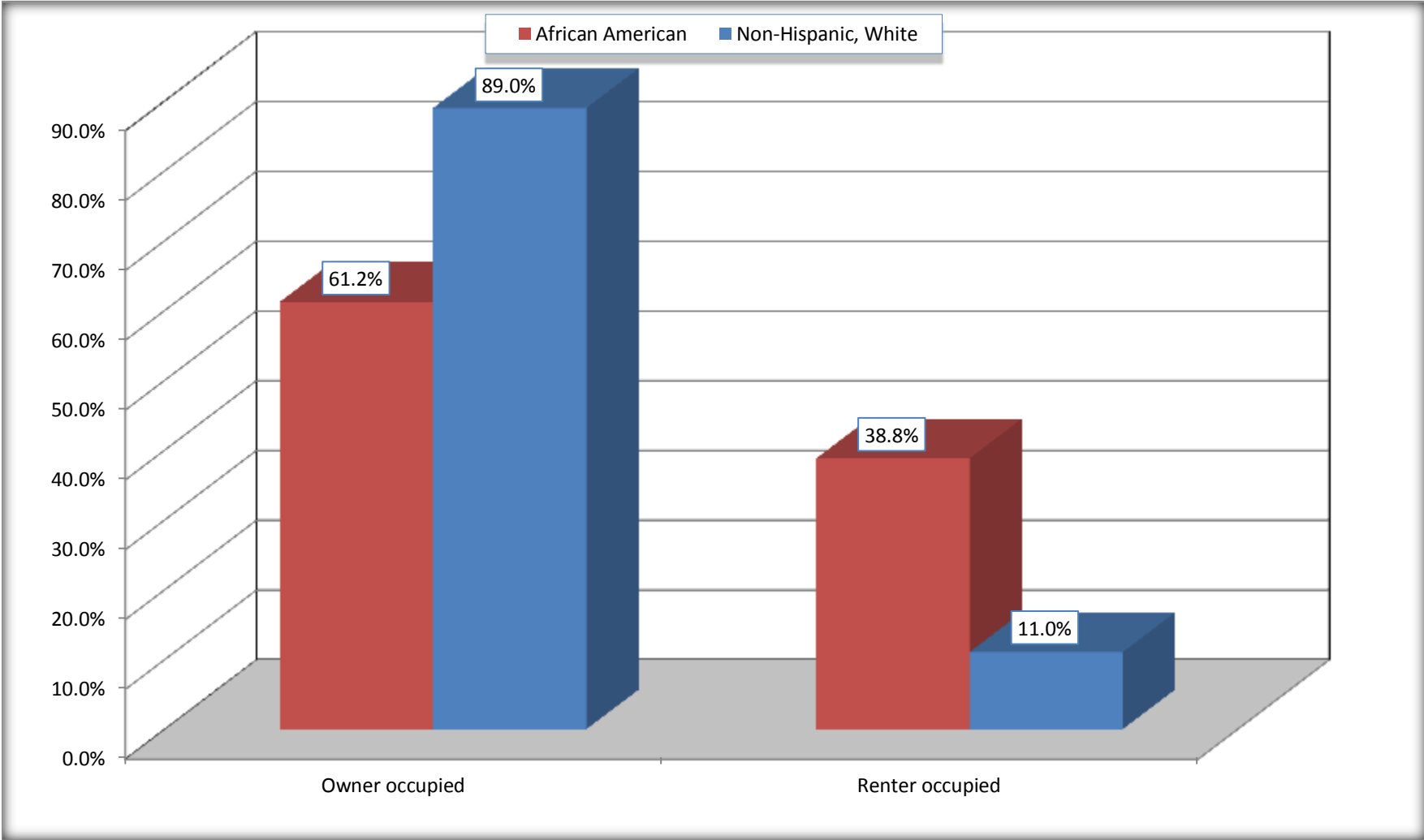
Source: U.S. Census Bureau, 2008-2012 American Community Survey

For information on confidentiality protection, sampling error, nonsampling error, and definitions, see Survey Methodology.

<http://www.census.gov/acs/www/UseData/index.h>

Home Owners and Renters by Household

Olivette city, Missouri



Source: B25003. TENURE - Universe: OCCUPIED HOUSING UNITS
Data Set: 2008-2012 American Community Survey 5-Year Estimates

B25014. OCCUPANTS PER ROOM - Universe: OCCUPIED HOUSING UNITS

Data Set: 2008-2012 American Community Survey 5-Year Estimates

	Olivette city, Missouri					
	African American	Margin of Error (+/-)	% of AA Total	White, Not Hispanic	Margin of Error (+/-)	% of NHW Total
Total:	691	142	100.0%	2,093	176	100.0%
1.00 or less occupants per room	691	142	100.0%	2,080	178	99.4%
1.01 or more occupants per room	0	16	0.0%	13	20	0.6%

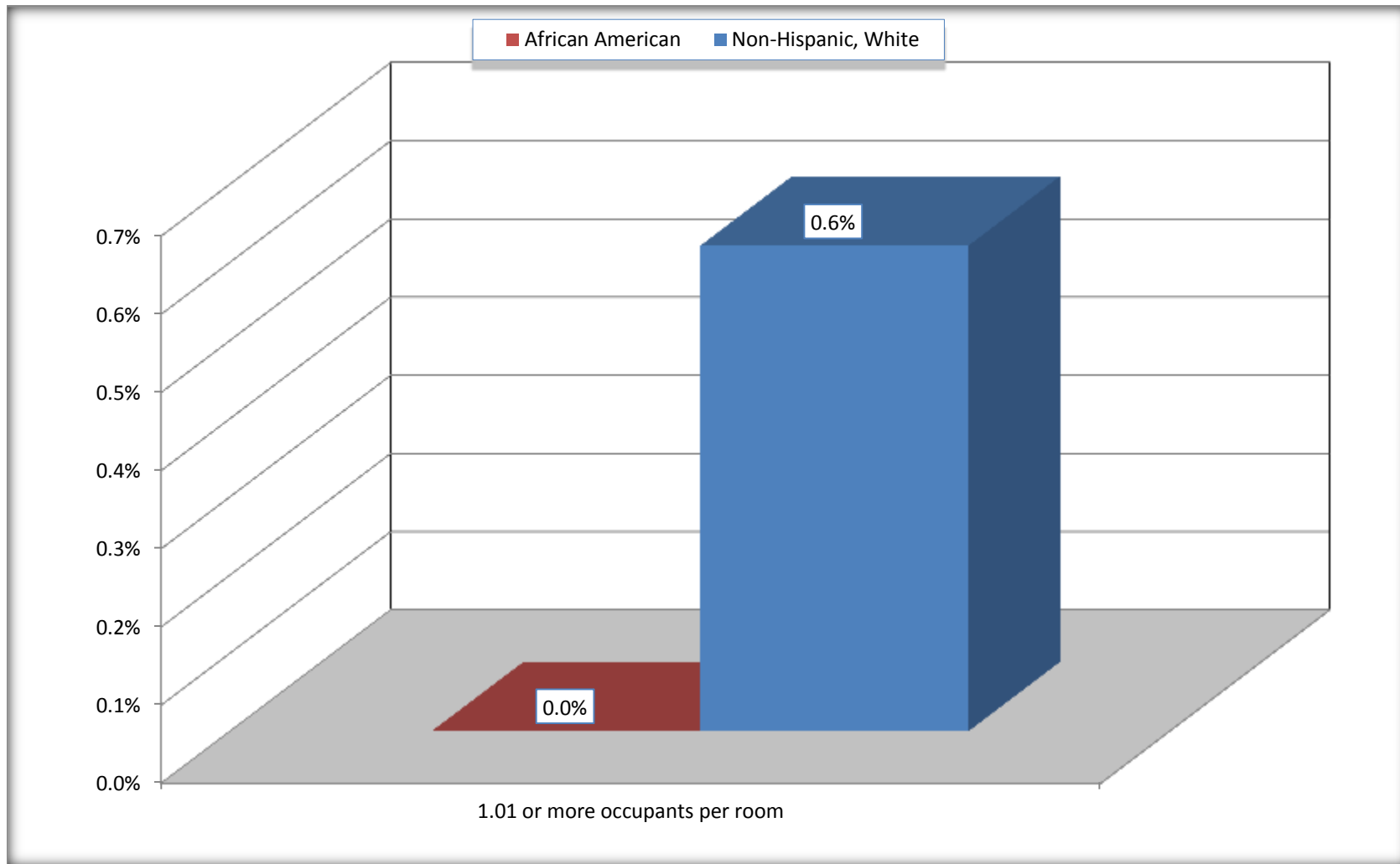
Source: U.S. Census Bureau, 2008-2012 American Community Survey

For information on confidentiality protection, sampling error, nonsampling error, and definitions, see Survey Methodology.

<http://www.census.gov/acs/www/UseData/index.ht>

More than One Person per Room (Crowding) by Household

Olivette city, Missouri



Source: B25014. OCCUPANTS PER ROOM - Universe: OCCUPIED HOUSING UNITS
Data Set: 2008-2012 American Community Survey 5-Year Estimates

B18101. AGE BY DISABILITY STATUS

Data Set: 2008-2012 American Community Survey 5-Year Estimates

	Olivette city, Missouri					
	African American	Margin of Error (+/-)	% of AA Total	White, Not Hispanic	Margin of Error (+/-)	% of NHW Total
Total:	1,429	280	100.0%	4,849	409	100.0%
Under 18 years:	279	103	19.5%	1,097	31	22.6%
With a disability	33	25	2.3%	29	28	0.6%
No disability	246	104	17.2%	1,068	189	22.0%
18 to 64 years:	830	183	58.1%	2,928	275	60.4%
With a disability	27	35	1.9%	141	69	2.9%
No disability	803	188	56.2%	2,787	252	57.5%
65 years and over:	320	119	22.4%	824	143	17.0%
With a disability	117	82	8.2%	296	86	6.1%
No disability	203	78	14.2%	528	111	10.9%

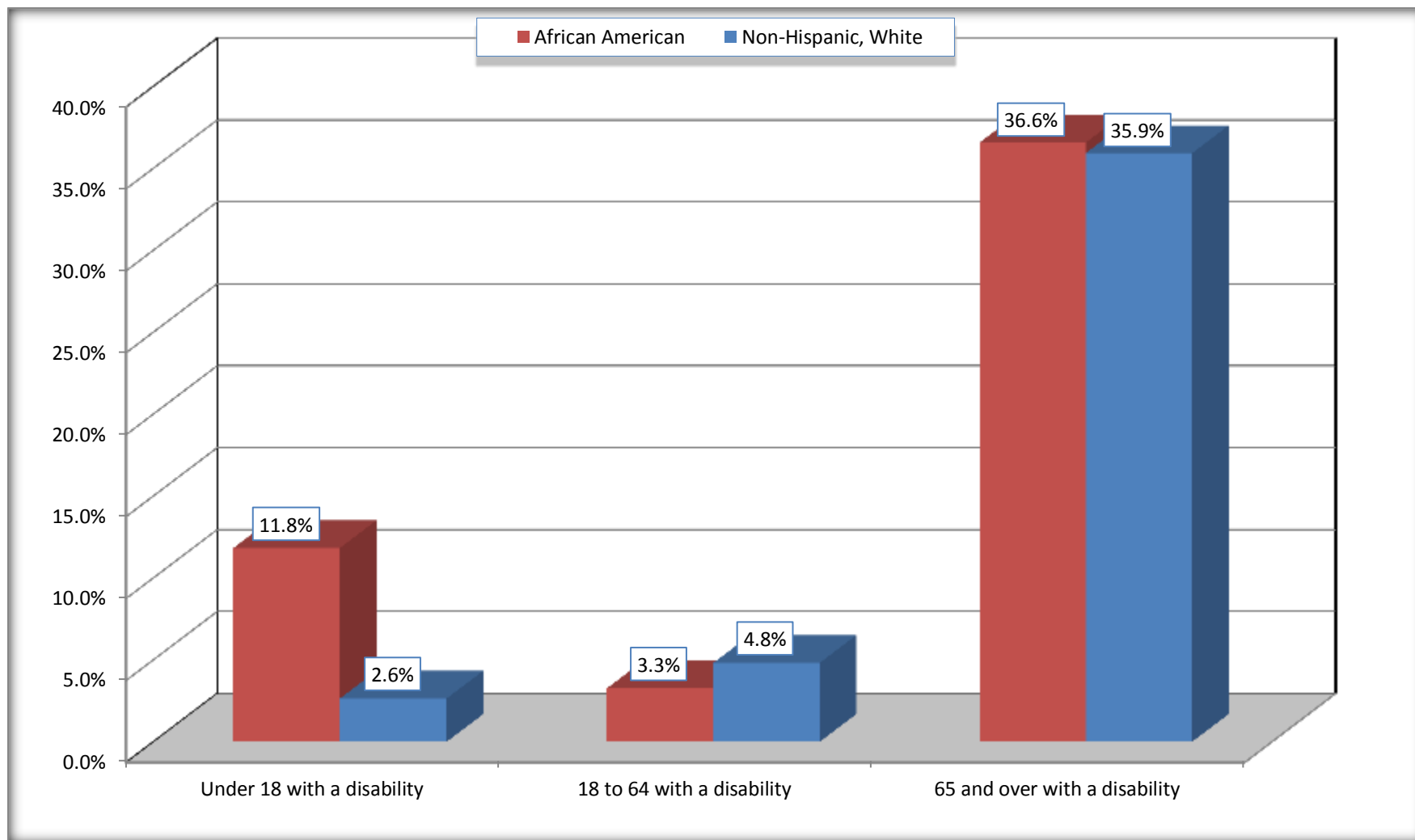
Source: U.S. Census Bureau, 2008-2012 American Community Survey

For information on confidentiality protection, sampling error, nonsampling error, and definitions, see Survey Methodology.

<http://www.census.gov/acs/www/UseData/index.htm>

Disability by Age

Olivette city, Missouri



Source: B18101. AGE BY DISABILITY STATUS
Data Set: 2008-2012 American Community Survey 5-Year Estimates

C27001B. HEALTH INSURANCE COVERAGE STATUS BY AGE

Data Set: 2008-2012 American Community Survey 5-Year Estimates

	Olivette city, Missouri					
	African American	Margin of Error (+/-)	% of AA Total	White, Not Hispanic	Margin of Error (+/-)	% of NHW Total
Total:	1,429	280	100.0%	4,849	409	100.0%
Under 18 years:	279	103	19.5%	1,097	193	22.6%
With health insurance coverage	279	103	19.5%	1,097	193	22.6%
No health insurance coverage	0	16	0.0%	0	16	0.0%
18 to 64 years:	830	183	58.1%	2,928	275	60.4%
With health insurance coverage	732	177	51.2%	2,729	252	56.3%
No health insurance coverage	98	75	6.9%	199	105	4.1%
65 years and over:	320	119	22.4%	824	143	17.0%
With health insurance coverage	320	119	22.4%	824	143	17.0%
No health insurance coverage	0	16	0.0%	0	16	0.0%

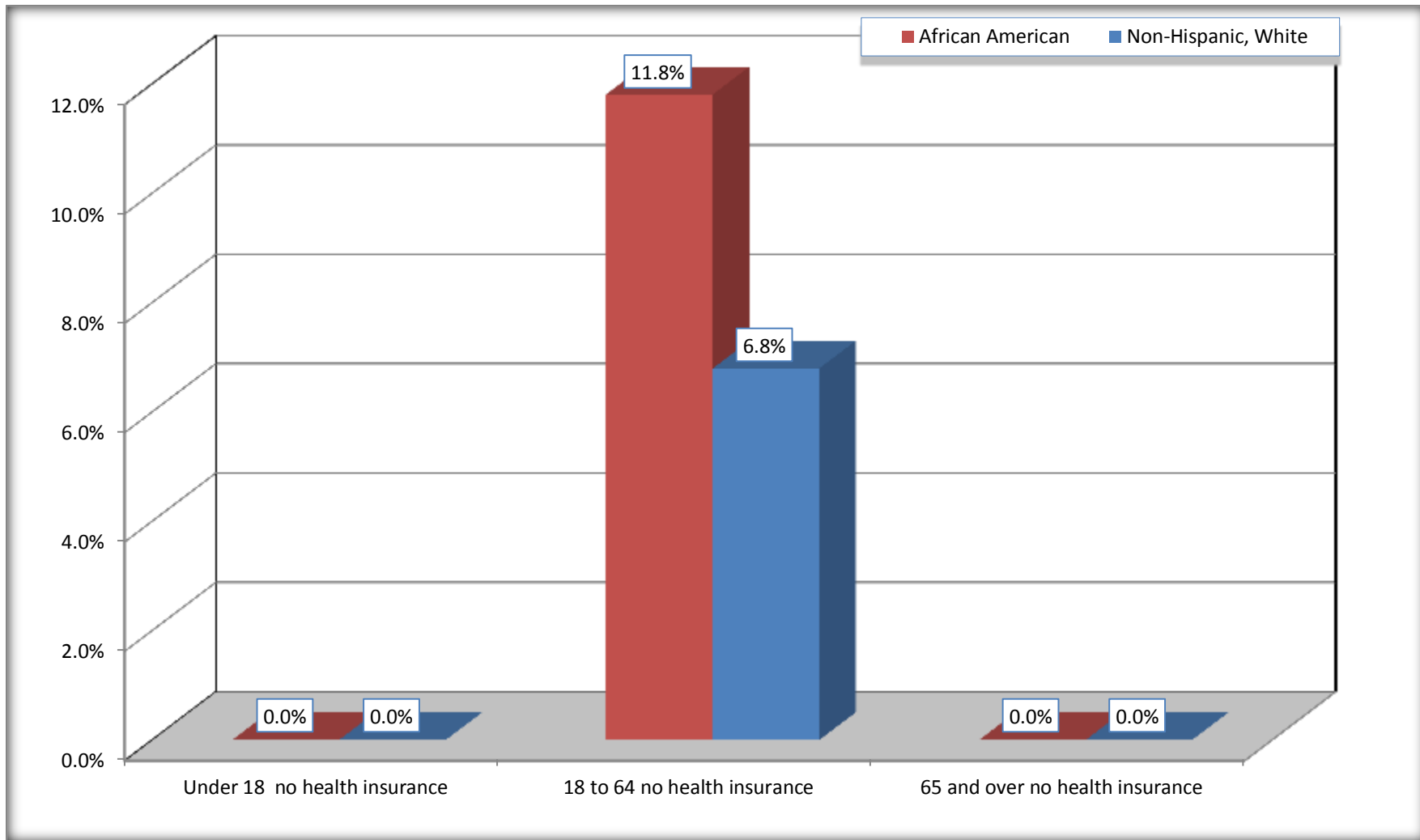
Source: U.S. Census Bureau, 2008-2012 American Community Survey

For information on confidentiality protection, sampling error, nonsampling error, and definitions, see Survey Methodology.

<http://www.census.gov/acs/www/UseData/index.htm>

Lack of Health Insurance Coverage by Age

Olivette city, Missouri



Source: C27001B. HEALTH INSURANCE COVERAGE STATUS BY AGE
Data Set: 2008-2012 American Community Survey 5-Year Estimates